



TELESOFT Camera Control System



Features:

- » Control up to 16 cameras via Ethernet.
- » Lighting and microphone control.
- » Used with a joystick to control pan/tilt.
- » Store up to 8 presets – Pan, Tilt, Zoom and Focus values are saved.
- » Presets are recalled through either a Fade or Cut. Cut is instantaneous; Fade is gradual and is set between 1 and 44 seconds.
- » Picture Icons for frequently used shots.
- » Scenes store camera settings optimized for particular lighting – store up to 4 scene files per camera.

Free Trial Software Available

Contact Telemetrics Sales Department

The Telemetrics TELESOFT Camera Control System allows an operator to remotely control video cameras' pan & robotic functions. TELESOFT is designed to control Telemetrics heads and can be used with PTZ and controllable cameras from all major manufacturers. The system even allows cameras from various manufacturers to be mixed and matched on a common control system. This is the only control system in the market that allows the user to control all camera functions for up to 16 cameras, including lighting and microphone control (where applicable). Scenes are used to store camera settings that have been optimized for particular lighting and each camera can have 4 scene profiles.

In addition to scenes, each camera can have 8 presets. Each preset stores pan, tilt, zoom and focus values for a particular shot. When recalling a preset, the user has the option of either cutting or fading the shot. The cut feature provides instantaneous transitions to a preset shot while the fade feature provides a gradual transition to a preset shot. The fade transition time can be set to any length between 1 second and 44 seconds. Picture Icons is a new feature for house of worship applications. Frequently used shots can be assigned specific icons for fast and easy recall. Using a DS-4, we can make 3rd party PTZ's Ethernet Controlled.



TELESOFT Camera Control System

Compatible Cameras

PTZ Integrated Cameras	Canon: BU-45 / BU-50 / NU-700 / XU80/BU-47 Sony: BRC300 / BRC-700 / BRC-900 Panasonic: AW-HE50 / AW-HE60 / AW-HE100 / AW-HE120 Cam-Corp: Q-Ball Pelco: All Pelco D Protocol
Pan/Tilt Heads	Telemetrics: All models Panasonic: AW-PH360 / AW-PH400 / AW-PH405 / AW-PH650
Cameras	Telemetrics: HDSC Sony: All 700 Controlled cameras Panasonic: All AK-HC / AWE-870 / All HPX JVC: All GY Types Hitachi: All RC-Z3 controlled types

Available Controls

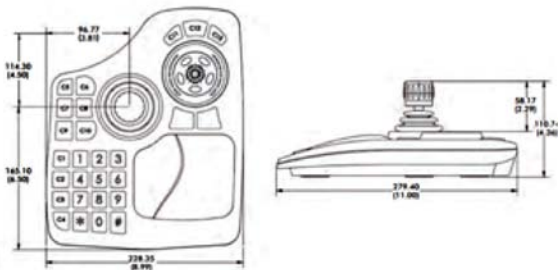
Pan / Tilt / Zoom / Focus / Iris / Master Black / Lens Stabilizer / Camera Mode:
Auto or Manual / White Balance / Video Gain / Color Matrix / Red, Green and Blue
Gains / Shutter / Sharpness / Knee Point-Slope / Gamma Curve / Hue / Detail /
Black Stretch-Middle-Press / Camera Power / ND Filters / Wiper / Washer

Ordering Information

TJP Surface Bundle	See Config #1. Includes Tablet, Joystick and Software
--------------------	---

Accessories

TJP-USB Multifunction
Controller w/Joystick



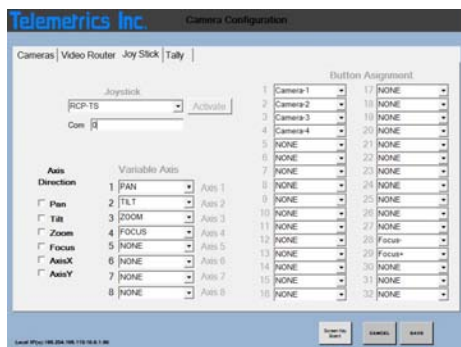
Specifications

Joystick Performance	Hall effect three axes joystick – X/Y/Z for positioning control
Joystick Travel	36° for X and Y axes; 60° for Z axis
Centering	Single spring, omni-directional
Joystick Shaft	Stainless Steel
Joystick Boot	Neoprene
Joystick Handle	Glass filled nylon
Joystick Performance	Spring loaded shuttle ring travel ±40° Smooth action knob rotates 360°
Push Button Performance	27 programmable push buttons rated for 500,000 life cycles Lighting: high efficiency LED Push button material: silicon “Mouse” push buttons are rated for 10,000,000 life cycles
Desktop Housing	High Impact ABS
Power	Via USB interface (5V DC)
Power Consumption	1A
Operating Conditions	-25°C to +85°C (-13°F to +185°F)
Approvals	EN 55024:1998, EN 55022, FCC Part 15 Subpart B Class B, RoHs compliant
Connectors	USB Type A Male
Cable Length	2m (6' 6.8")
Systems Support Integration	Windows 8, Windows 7, Vista, XP, 2000
Environmental	For indoor use only
Boxed Weight	1.33kg (47 oz.)

Specifications subject to change without notice.

TELESOFT Button Assignment Page

Buttons are assignable to the following functions: Camera Select,
Mode Cut/Face Select, Preset Save/Recall



Notes:
Dimensions in mm (inch)
Supplied individually boxed with instruction booklet

Telemetrics
Camera Control Systems

Remote Camera Operation System Enterprise Database Control System - EDCS



Features:

- » Forms the foundation of multi-room, multi-site and multi-national networked systems
- » Operate any networked room from any networked RCCP-1 control panel
- » Enables you to add a Camera Shading Panel (CSP) to any RCCP-1 configuration
- » Facilitates multi-site failover and disaster recovery planning
- » Acts as a central repository for all Shows, Shots and Moving Shots
- » Provides enterprise database for all User, Groups and Room settings
- » Automatic sync between Master and Slave databases
- » Leverages Microsoft® Sequential Query Language (SQL) database technology
- » Backup of database system management

The Telemetrics® Enterprise Database Control System (EDCS) opens up exciting possibilities for the Telemetrics RCCP-1, RCCPO-1-STS and RCCPO-1-LGS camera control systems. EDCS enables any control panel in your system to operate any room in your system—anywhere in the world. Want two operators instead of one? EDCS enables you to add a separate, dedicated Camera Shading Panel (CSP) to supplement the RCCP-1 control surface. Need to coordinate multiple studios and multiple control rooms? EDCS makes it happen. Operating internationally? EDCS empowers you to operate robotic cameras in your Moscow news bureau from a control panel in your Manhattan studios. With EDCS, the power is yours.



Remote Camera Operation System Enterprise Database Control System - EDCS

Specifications

Enterprise Database Control Software (EDCS)	Microsoft SQL Database Microsoft Synchronization Technology
---	--

Specifications and features subject to change without notice



Dell R7910 shown as typical

Ordering Information

EDCS	Enterprise Database Control Software
EDCSO-DL	DB Device License**
	EDCS Computer Intel® Xeon® Processor Windows 7 Professional 64 NVIDIA® Quadro 8GB (2x4GB) 2133MHz DDR4 Intel 4 port AHCI SATA chipset controllers RAID 0 HD - 500GB 2.5" 2nd HD - 500GB 2.5" DVD ROM Quad Port Network (4x1Gbit) Dual, Hot-plug, Redundant Power Supply (1+1), 1100W ReadyRails Sliding Rails Without Cable Management Arm

**A License is Required for Devices "Controlled" by Database.
Device is Defined as PTZ Camera Station or Controller.