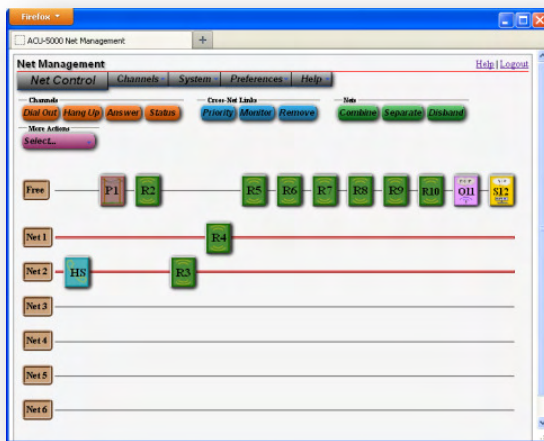


ACU-5000 / Communication Interoperability with SIP

Overview –

- The ACU-5000 retains the great features that made JPS’s ACU product line the industry leader – with a technology refresh in a smaller, One Rack Unit high form factor plus many new capabilities
- The ACU-5000 IP provides true convergence of Local Interoperability, IP communications and control, giving your radio system the advantages of the open-standards SIP protocol while adding radio functionality to your SIP network
- Incredibly versatile; 12 communications channels that can be configured as user-defined combinations of radio, phone, or VoIP (SIP) or RoIP channels
- Offers unsurpassed local and wide area interoperability by directly connecting or networking UHF, VHF, 700/800, HF, P25 radios and PTT devices, Cellular, SIP and Land line telephones / end points



- Integrated Web Browser-Based configuration and control prevents the need to have hardware specific software applications preloaded on controlling computers
- Optimized cables and preloaded settings ensure quick interface of radios, phones, satellite (Sat) phones, etc.

Advantages –

- High port density – 1 Rack Unit high
- Digital Signal Processing



Past Performance –

- Operationally fielded, public safety and NG

Features / Benefits –

- Web Browser-based control and configuration and drag & drop connection capability
- Sophisticated DSP algorithms
- Each unit capable of 4 to 12 channels (can be updated in the field). Two units can be combined for up to 24 channels with a single unified control interface
- Onboard radio templates allow quick set up based on radio type
- TX & RX Audio delay
- *Bridging System Interface* (BSI) compliant SIP protocol for interoperability between gateways of various manufacturers
- Uses the JPS library of radio-specific interface cables, covering hundreds of radio makes & models
- Access controls allow system administrator to tailor permissions to individual users, limiting sensitive operations to authorized users only
- JPS WAIS System capable
- Appropriate for Public Safety, DOD, Private Sector

EXCLUSIVE REPRESENTATIVE:





PHASE Engenharia Ind. e Com. Ltda.

Av. Olegário Maciel 231, Lojas 101 a 105
Barra da Tijuca | Rio de Janeiro, RJ | CEP 22 621 200
Tel +55.21.2493.0125

Av. Ibirapuera 2.907, Conj. B306 & 7 - Ed. Conv. Corp. Plaza – Torre C
Indianópolis | São Paulo-SP | CEP 04029-200
Tel +55 11 3589-0125

phase@phase.com.br | www.phase.com.br