



Camera Track System – CTS-S2



Features:

- » Smooth operating variable speed
- » Servo Controlled
- » Programmable timed presets start and stop all axes simultaneously
- » Lightweight Aluminum Track
- » In-line Cable Trolleys or companion Cable Track
- » Upright or Inverted mounting
- » Straight or Curved Configurations
- » Direct drive trolley

Telemetrics Camera Track Systems provide smooth operating variable speed and are Servo control compatible with Telemetrics pan/tilt mechanisms and controllers. Track is made of lightweight aluminum. The systems offer preset position storage and motion recall.

Available in straight or curved configurations with adjustable ceiling and wall mounting brackets. Plus flexible options for custom lengths and curve sections. Usable in “H” configuration for overhead X-Y positioning. Can be interfaced with the ECM-PT-S2 Extendable Camera Mount for camera elevation positioning.



Camera Track System – CTS-S2

Specifications

Input Voltage	0-24 VDC
End Stops	Adjustable
Min. Speed	.045 ft/sec
Max. Speed	.467 ft/sec (High Speed Option available, 1.58 ft/sec)
Trolley Load	50 lbs
Weight	Track - 1 lb/ft Trolley - 6 lbs (not including P/T Head)

Specifications and features subject to change without notice

IMPORTANT:

- A) If curved track is used, surface of mounting material must match curve on track.
 B) Standard track splices occur every 10feet, consult factory if track length is not a 10 foot multiple.

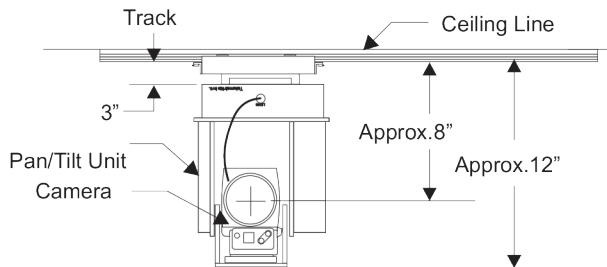
Model	Part List	Quant.
CTS-TRK-1	Left Track	Y ft
CTS-TRO-S2	Trolley A	1
CTS-TRK-CC	Cable Carriers	(X+Y)/2

Note 1: The X and Y dimensions are variable and are specified by the customer. Y Dimension has a 10 Ft Maximum.

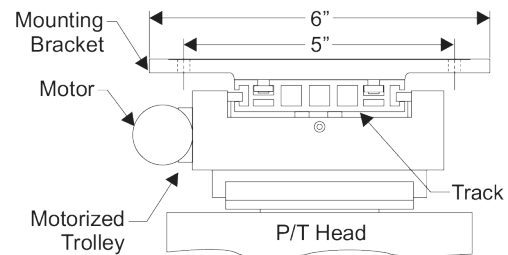
Note 2: Cables may be wired from any corner of the track.

Note 3: Dimension L the Cable Carrier's parking space. Track may be extended to prevent loss of travel.

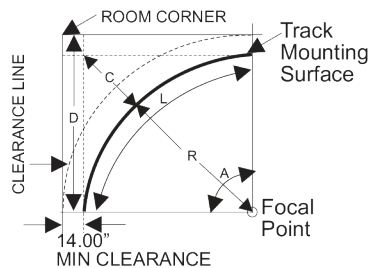
Front View



End View

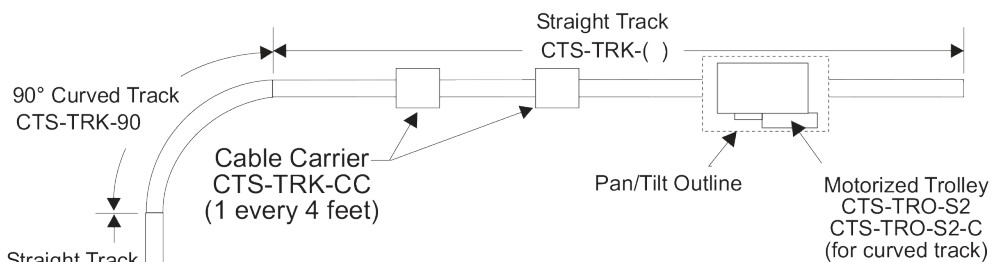


View Looking Up at Ceiling



R=14ft or more
 A=Total angle of curved track
 $L = A(\text{DEG}) \times (n/180 \times R)$ = Length of Curved Track Mntg surface
 $C = (.4142 \times R)$ = Surface offset length
 When A=90DEG, D=R
 R,A=Specified by customer

Example:
 R=14ft, A=90DEG
 $L = 90 \times (3,14/180) \times 14 = 22\text{ft}$
 $C = .4142 \times 14 = 5.8\text{ft}$
 D=14ft



() = Standard 10' lengths customized to desired total length in feet

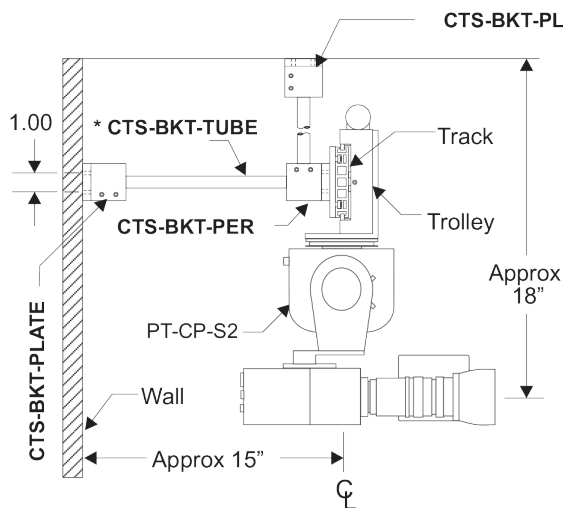


Camera Track System – CTS-S2

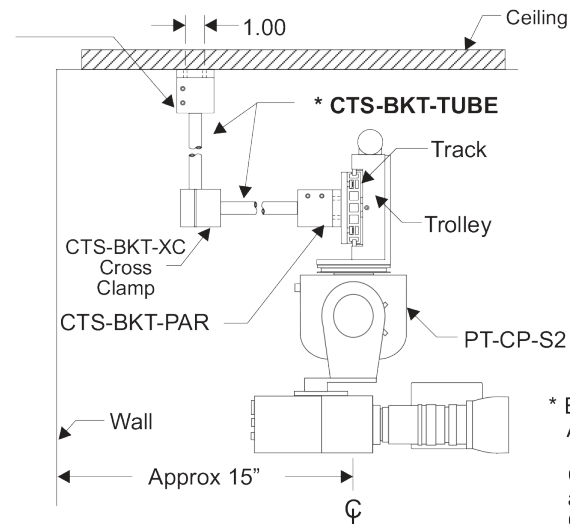
Curved Track



Perpendicular Track Mounting

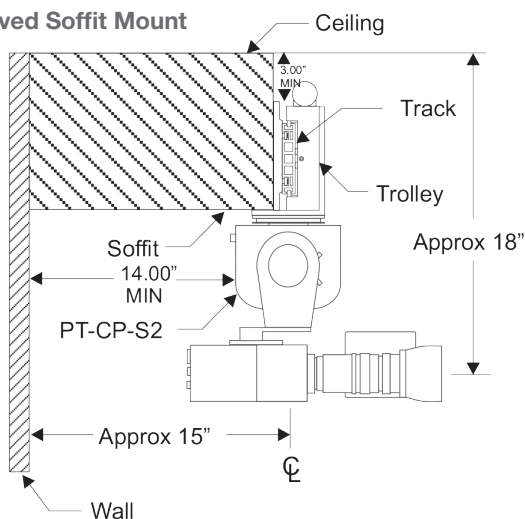


Parallel Track Mounting



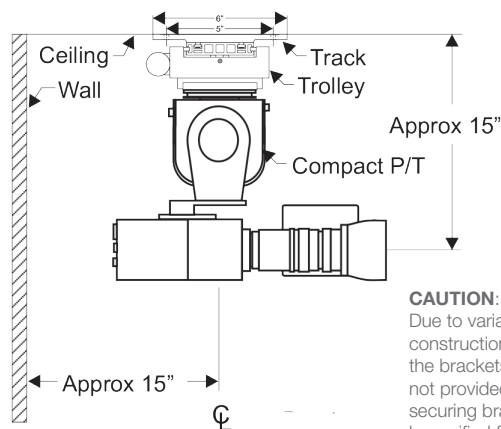
* Extension Tube.
Available in standard
1, 3 and 6 ft lengths.
Custom lengths
available.
Consult factory.

Curved Soffit Mount



IMPORTANT NOTE:
Radius of track must match radius of soffit.

Standard Ceiling Mount

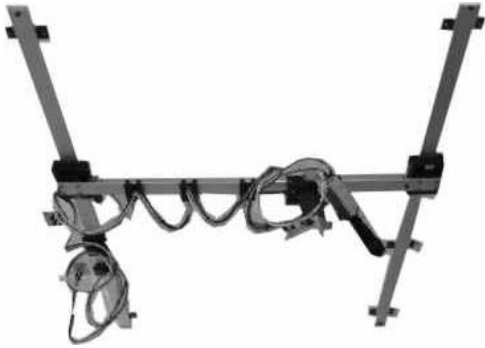


CAUTION:
Due to variation of wall and ceiling
construction, hardware for mounting
the brackets to the wall or ceiling is
not provided. Exercise care when
securing bracket. Installation should
be verified for proper fastening and
safety.

Telemetrics
Camera Control Systems



Camera Track System – CTS-S2-H



Features:

- » Smooth operating variable speed
- » Servo Controlled
- » Programmable timed presets start and stop all axes simultaneously
- » Lightweight Aluminum Track
- » In-line Cable Trolleys or companion Cable Track
- » Upright or Inverted mounting
- » Direct drive trolley

Telemetrics Camera Track Systems provide smooth operating variable speed and are Servo control compatible with Telemetrics pan/tilt mechanisms and controllers. Track is made of lightweight aluminum. The systems offer preset position storage and motion recall.

Available in straight or curved configurations with adjustable ceiling and wall mounting brackets. Plus flexible options for custom lengths and curve sections. Usable in “H” configuration for overhead X-Y positioning. Can be interfaced with the ECM-PT-S2 Extendable Camera Mount for camera elevation positioning.



Camera Track System – CTS-S2-H

Specifications

Input Voltage	0-24 VDC
End Stops	Adjustable
Min. Speed	.045 ft/sec
Max. Speed	.467 ft/sec (High Speed Option available, 1.58 ft/sec)
Trolley Load	50 lbs
Weight	Track - 1 lb/ft Trolley - 6 lbs (not including P/T Head)

Specifications and features subject to change without notice

CAUTION:

Due to variation of wall and ceiling construction, hardware for mounting the brackets to the wall or ceiling is not provided. Exercise care when securing bracket. Installation should be verified for proper fastening and safety.

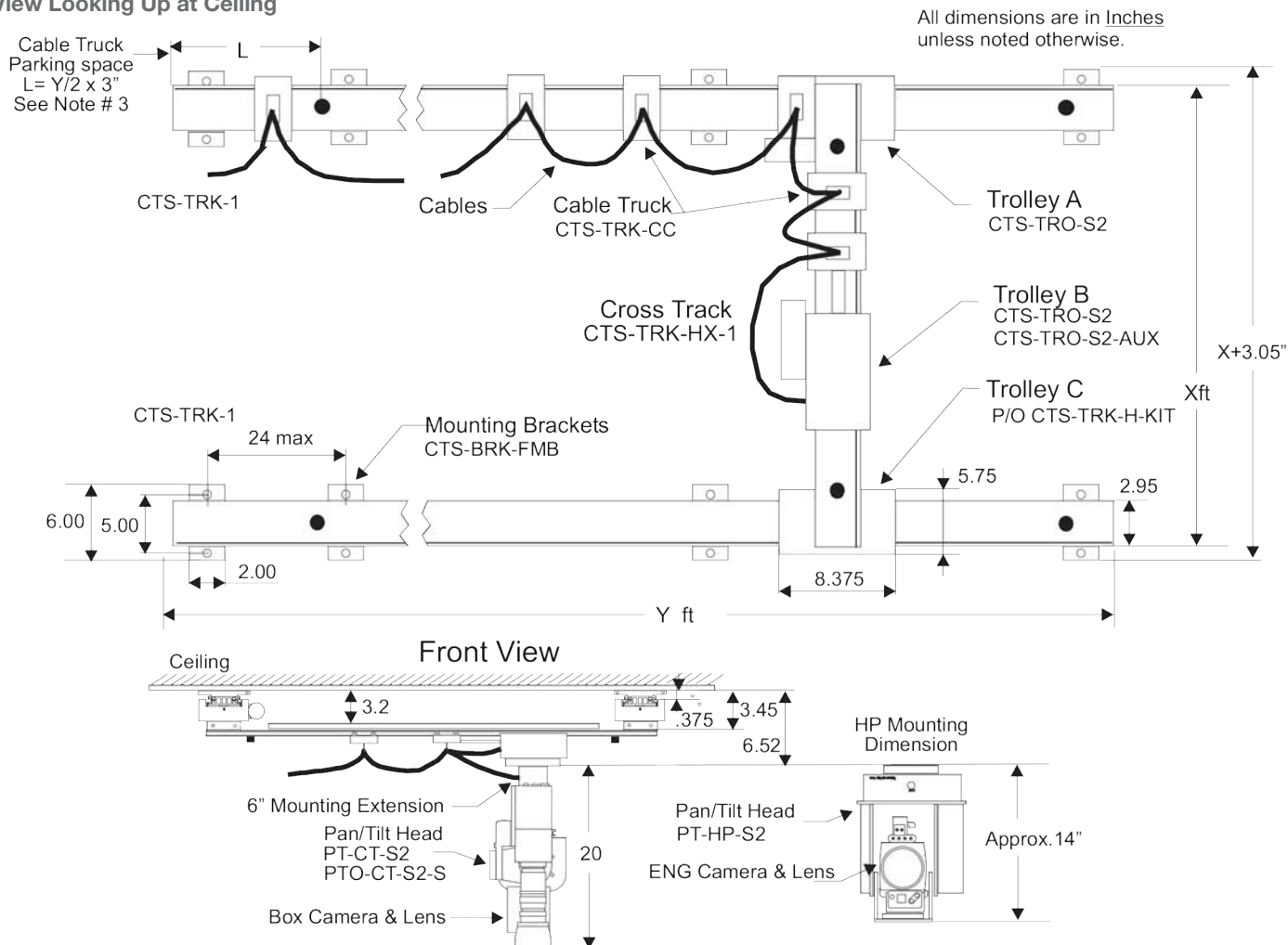
Model	Part List	Quant.
CTS-TRK-1	Left Track	Y ft
CTS-TRK-1	Right Track	Y ft
CTS-TRK-HX-1	Cross Track	X ft
CTS-TRO-S2	Trolley A	1
CTS-TRO-S2	Trolley B	1
CTS-TRO-S2-AUX	AUX Out Opt	1
CTS-TRK-CC	Cable Carriers	(X+Y)/2
CTS-TRK-H-KIT	Trolley C X-Track Mnt. Brk	1

Note 1: The X and Y dimensions are variable and are specified by the customer. Y Dimension has a 10 Ft Maximum.

Note 2: Cables may be wired from any corner of the track.

Note 3: Dimension L the Cable Carrier's parking space. Track may be extended to prevent loss of travel.

View Looking Up at Ceiling



Telemetrics
Camera Control Systems



TeleGlide Track System – TG4

Features:

- » Advanced composite wheels for ultra smooth motion
- » Trapezoid design for absolute wobble elimination
- » Continual auto track-trolley alignment (something no one else has!)
- » Level floor not critical
- » Simple installation
- » Field upgradable
- » May be configured in Straight, C, S or L shaped tracks
- » Ultra quiet even at high speeds
- » Smooth transitions between track sections

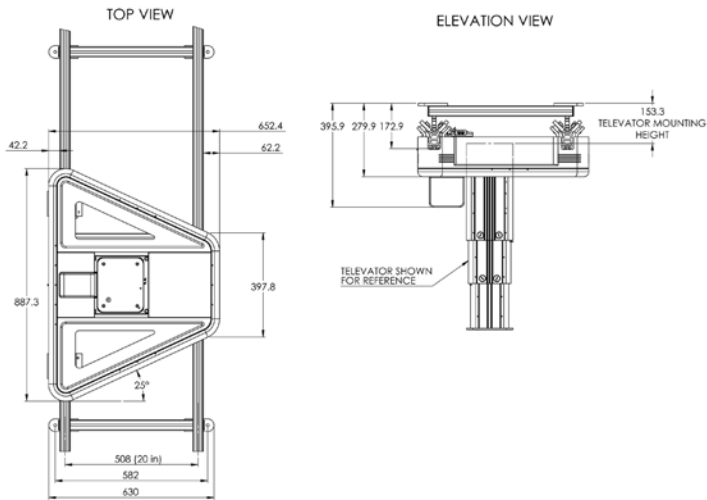


The TG4 is the latest addition to the TeleGlide family of Camera Track Systems to accommodate curve track requirements for television studio, conference room, sports and house of worship applications. Tracks can be bent down to a sharp radius. The TG4 features a redesigned, streamlined trolley and track, which minimizes space requirements. This new design has created a new product that can operate more effectively at a more affordable price. The TG4 track frame is constructed of easily assembled light-weight aluminum components. The Triple Balance System provides for increased stability and can be floor or ceiling mounted. Like the original TeleGlide system, the TG4 is fully servo controlled, providing accurate preset positioning and repeatable motion. The TG4 track system is compatible with all Telemetrics Pan/Tilt Heads, Extendable Camera Mounts, Telescoping Camera Mounts and Control Systems. Custom track lengths and cable management systems are available.

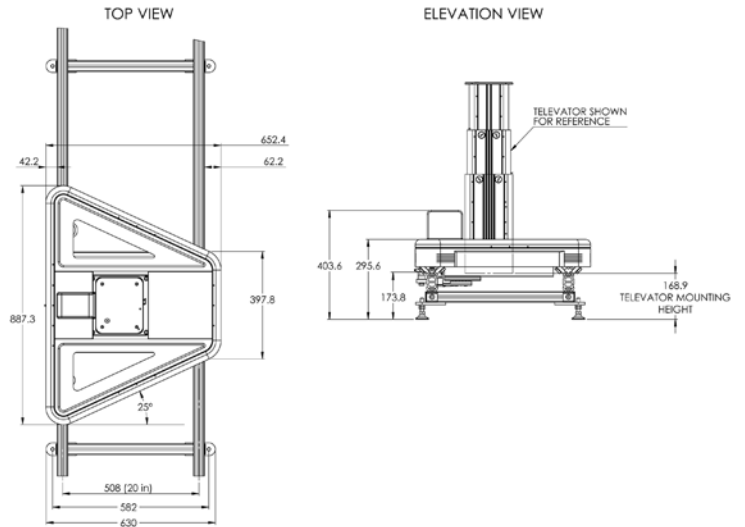


TeleGlide Track System – TG4

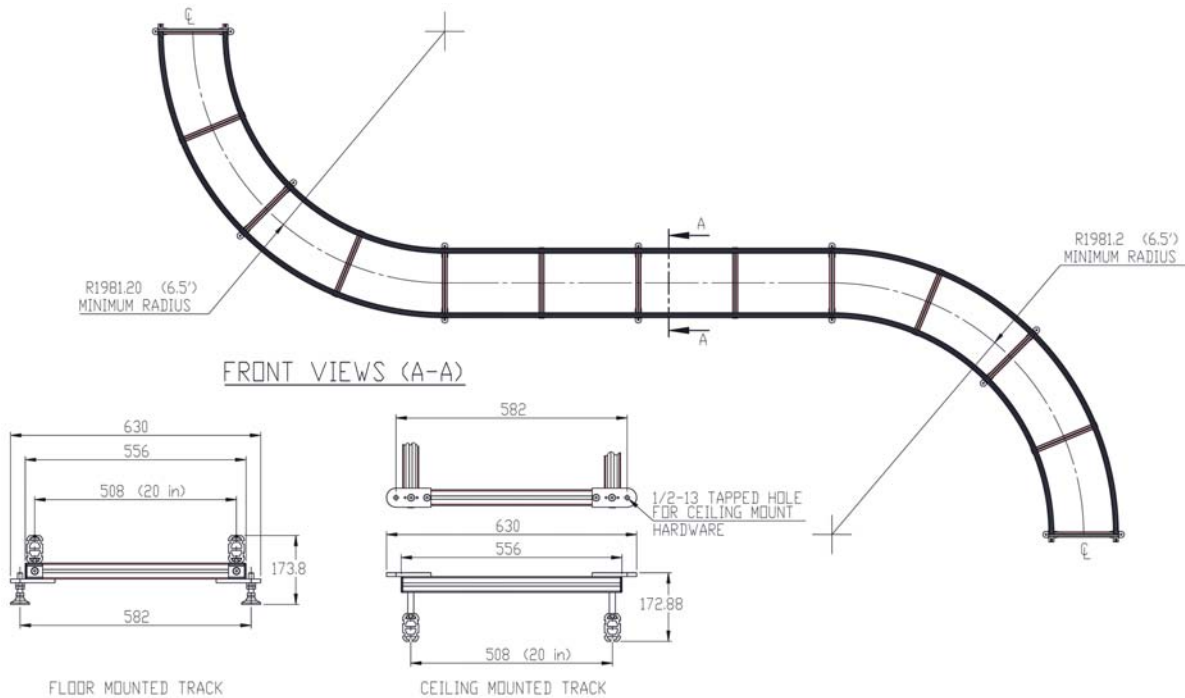
TG4 Trolley Outline Dimensions - Ceiling Mounted



TG4 Trolley Outline Dimensions - Floor Mounted



TG4 Track Dimensions





TeleGlide Track System – TG4

Specifications

Track Dimensions	20.0" (508.00 mm) W x 6.80" (73.00 mm) H
Track Weight	11.5 lbs/ft
Track Min. Radius	6.5' (to Center Line)
Acceleration	1 ft/s ² (0.3 m/s ²)
Trolley Dimensions	35" (887mm) L x 25.7" (652mm) W x 11" (282mm) H
Trolley Weight	70 lbs
Trolley Load	300 lbs
Servo	32 Bit Velocity and Positional Servo
Power Requirements	48V DC, 3A (6A peak)
Operating Temperature	0° C to 45° C (32° F to 113° F)

Specifications and features subject to change without notice

Ordering Information

Model Number	Description
TG4-FTK-XXX*	Track Floor Mount
TG4-CTK-XXX*	Track Ceiling Mount
TG4-TRO-F	TeleGlide Trolley Floor
TG4-TRO-C	TeleGlide Trolley Ceiling
TG0-TRO-CA	TeleGlide Trolley Collision Avoidance
TG-ACT	Cable Management System Floor
TG-CCT	Cable Management System Ceiling
*	XXX = 000-499: a straight track with XXX-feet XXX = 500-999: a track with custom bends

For Design Purposes: Cable management needs a parking area on track that can not be used by the trolley. To calculate the distance required:

TG-CCT - Cable Management System Ceiling - 1 FT per 10FT required
TG-ACT - Cable Management System Floor - 2 FT per 10FT required

i.e. a 100FT ceiling track needs a cable carrier area on the track when compressed of 10FT.



Telemetrics
Camera Control Systems



TeleGlide Track System – TG4M



Image shows TG4M trolley mounted with RoboEye Indoor/Outdoor Robotic Camera (PT-RE-1).

Features:

- » Freely accommodates straight, C, S or L-shaped tracks on ceilings or floors
- » Compact, 10-inch track width
- » Advanced composite wheels for ultra-smooth, near-silent motion
- » Supports loads up to 200 lb. (90 kg)
- » Robust engineering for the ultimate in camera stability: trapezoid trolley and continual auto track-trolley alignment
- » Works where conventional camera dollies won't, including uneven floors
- » 32-bit velocity and position encoding for incredibly smooth acceleration and deceleration, plus precise repeatability
- » Virtual set ready
- » Accommodates all Telemetrics pan/tilt heads as well as pan/tilt/zoom cameras
- » Enables coordinated trolley/pan/tilt/zoom moves in an all-Telemetrics system
- » Smooth, integral cable management
- » Field expandable/upgradable

TV studios already rely on the Telemetrics TG4 TeleGlide camera track system to deliver amazingly creative shots, greater flexibility, reduced operating costs and better space efficiency. Now Telemetrics is proud to offer these benefits in a more compact, more cost-effective version. Presenting the TG4M. Able to fit on floors and ceilings where space is even more constrained, the TG4M brings the benefits of our TeleGlide camera tracks to a whole new range of applications in broadcasting, conference rooms, education, worship and government. As you would expect, the TG4M retains many of the advantages of the TG4, including flexible configurations of Straight, C, S or L-shaped tracks; floor or ceiling mount; 32-bit velocity and position accuracy; plus meticulous engineering for the smooth, quiet operation that our customers require.



TeleGlide Track System – TG4M

Specifications

Track Dimensions	17.00" (431mm) W x 5.80" (147mm) H
Track Weight	11.5 lbs/ft (5.2 Kg)
Track Min. Radius	6.5' (to Center Line)
Acceleration	1 ft/s ² (0.3 m/s ²)
Trolley Dimensions	18.92" (481mm) L x 15.90" (404mm) W x 10.41" (265mm) H
Trolley Weight	55 lbs (25.0 Kg)
Trolley Load	200 lbs (90.7 Kg)
Servo	32 Bit Velocity and Positional Servo
Power Requirements	48V DC, 3A (6A peak)
Operating Temperature	0° C to 45° C (32° F to 113° F)

Specifications and features subject to change without notice

Ordering Information

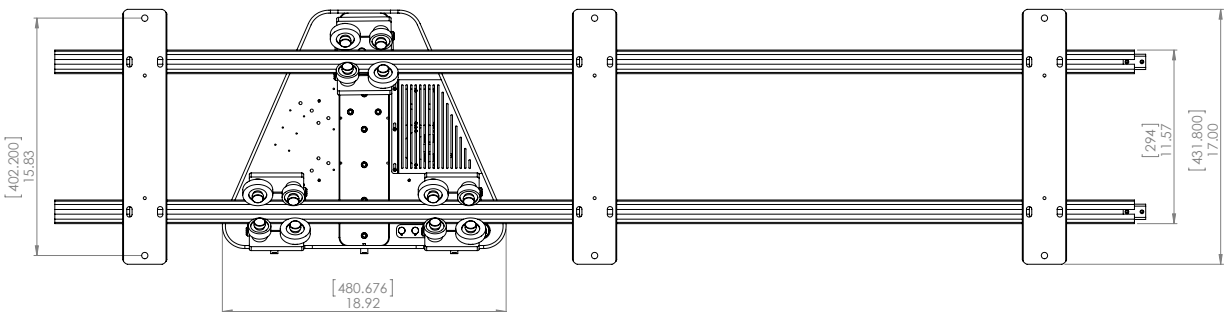
TG4M-FTK-XXX*	Track Floor Mount
TG4M-CTK-XXX*	Track Ceiling Mount
TG4M-TRO-F	TeleGlide Trolley Floor
TG4M-TRO-C	TeleGlide Trolley Ceiling
TG4M-TRO-CA	TeleGlide Trolley Collision Avoidance
TG-ACT	Cable Management System Floor
TG-CCT	Cable Management System Ceiling
*	XXX = 000-499: a straight track with XXX-feet XXX = 500-999: a track with custom bends

For Design Purposes: Cable management needs a parking area on track that can not be used by the trolley. To calculate the distance required:

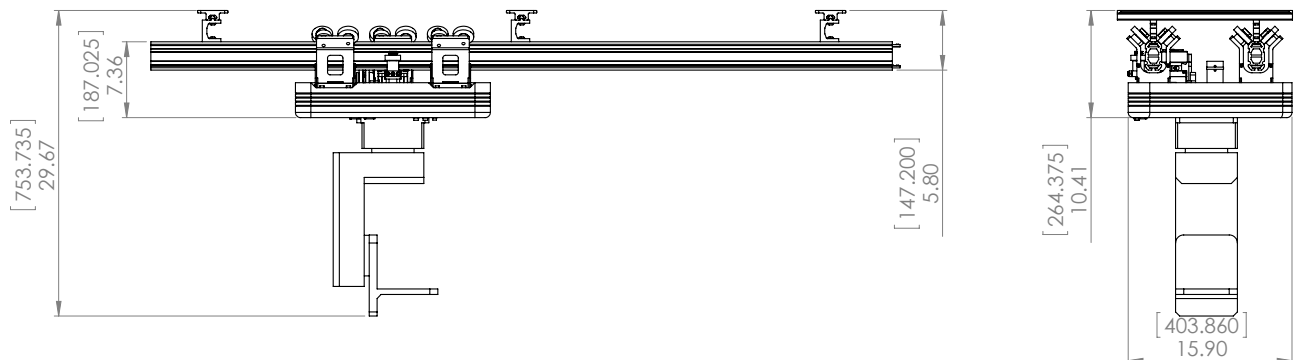
TG-CCT - Cable Management System Ceiling - 1FT per 10FT required

TG-ACT - Cable Management System Floor - 2 FT per 10FT required

i.e. a 100FT ceiling track needs a cable carrier area on the track when compressed of 10FT.



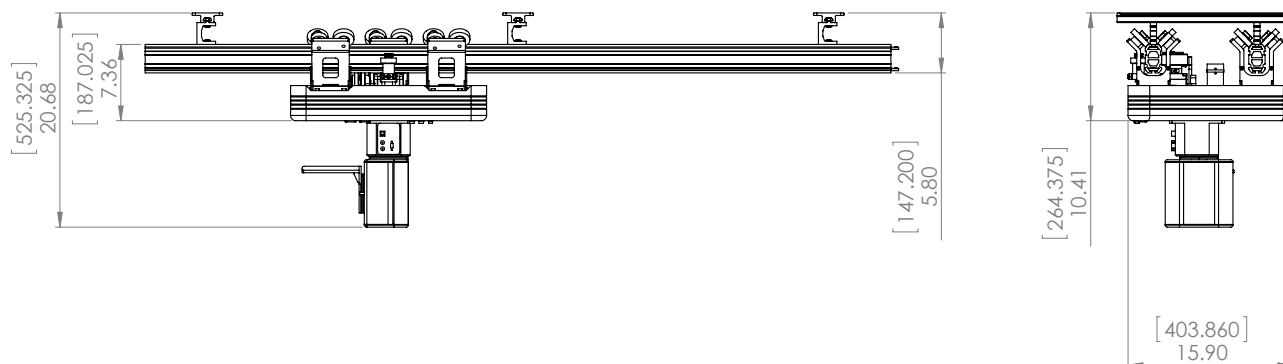
TG4M-PT-LP-S4



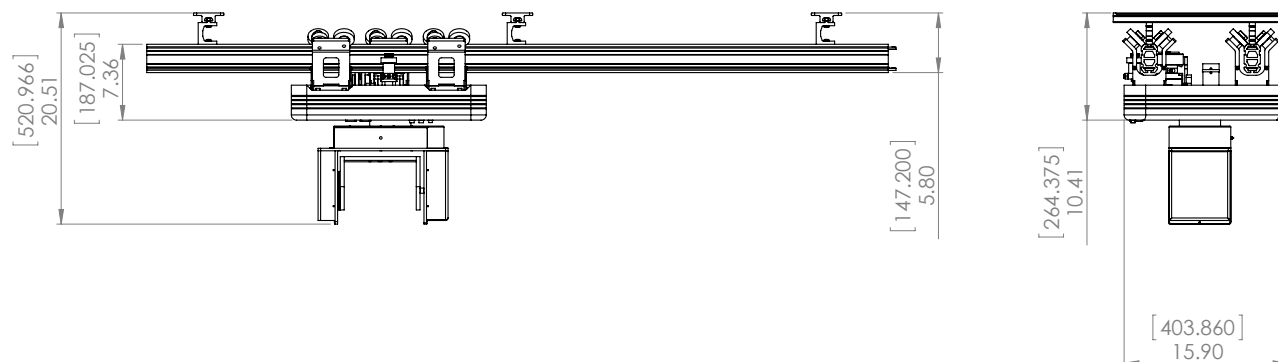


TeleGlide Track System – TG4M

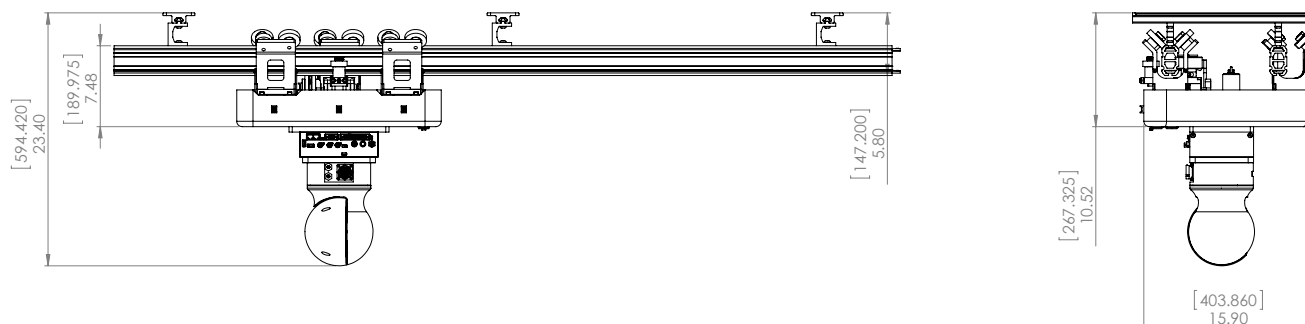
TG4M-PT-CP-S4



TG4M-PT-HP-S4



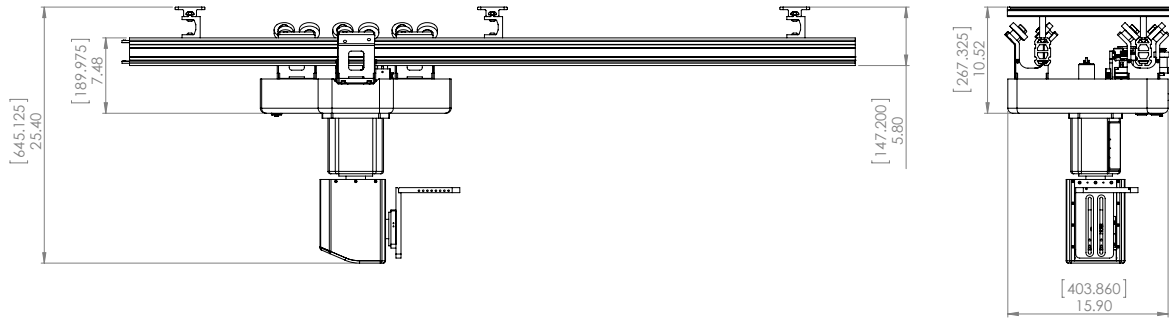
TG4M-RoboEye



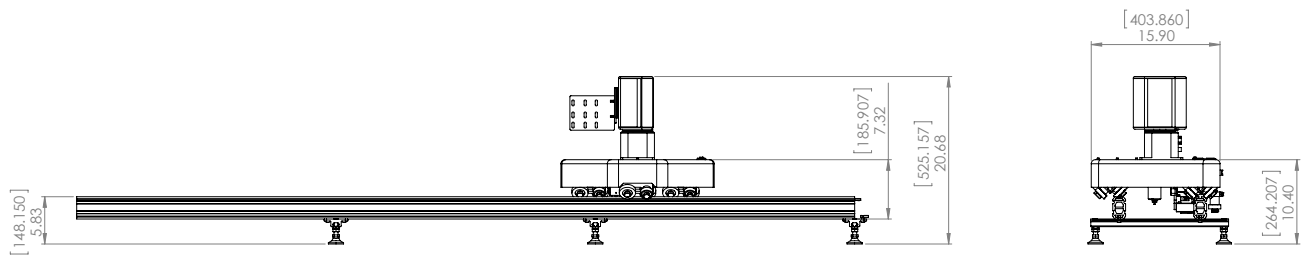


TeleGlide Track System – TG4M

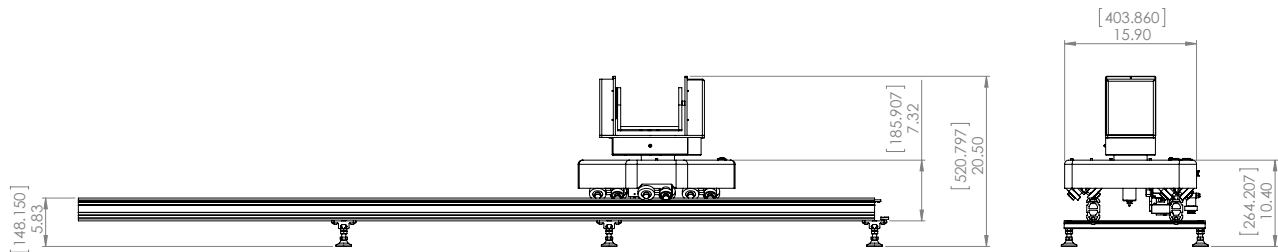
TG4M-PT-RM-1



TG4-PT-CP-S4



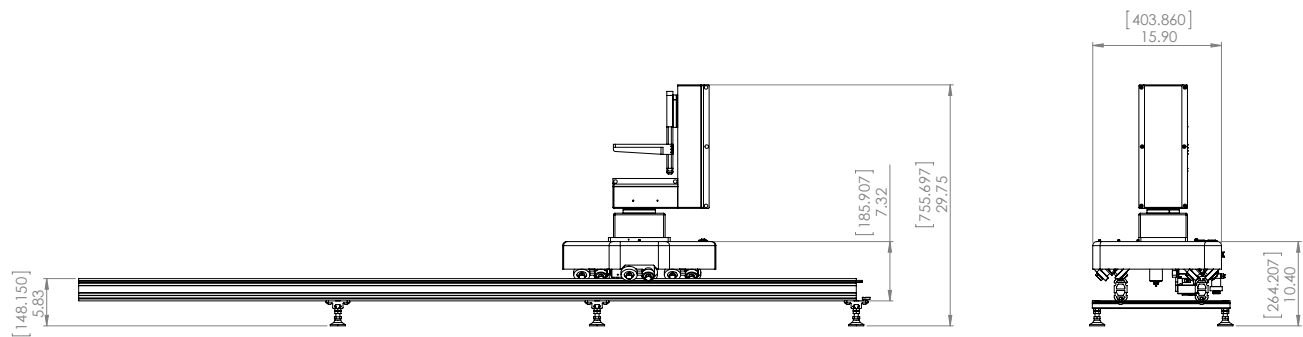
TG4M-PT-HP-S4



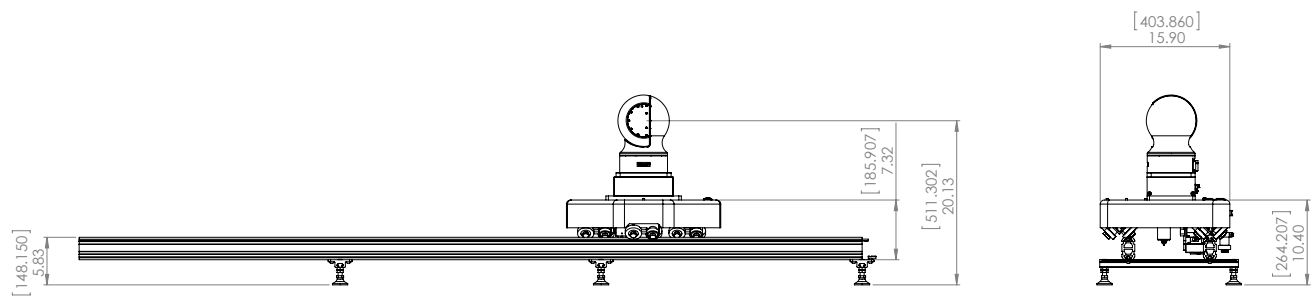


TeleGlide Track System – TG4M

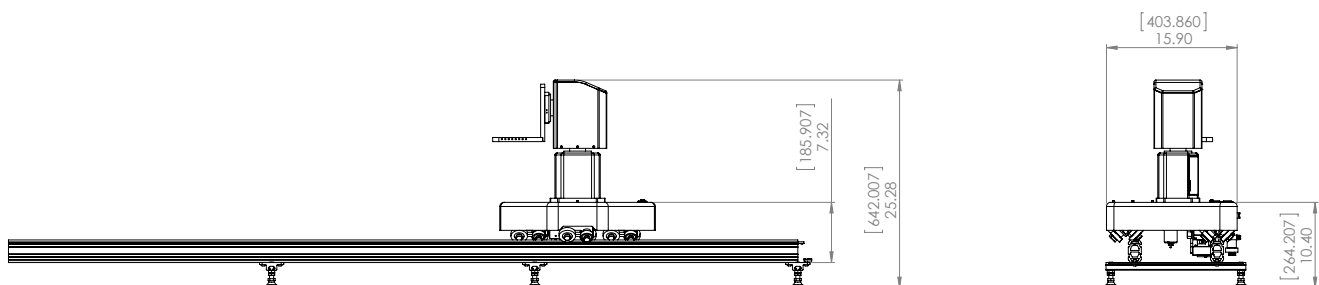
TG4M-PT-LP-S4



TG4M-RoboEye



TG4M-PT-RM-1



Telemetrics
Camera Control Systems