

# PHASE | Evertz: Automação e Controle

- **Magnum**.....p. 2
- **VistaLink Pro**.....p. 7
- **Mediator**.....p. 15



UNIFIED

MAGNUM

FACILITY CONTROL



PHASE<sup>®</sup>

[www.evertz.com](http://www.evertz.com)



1.877.995.3700

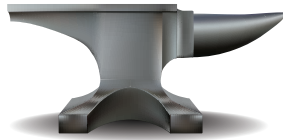
# Overview

Evertz' **MAGNUM** Unified Control System addresses the ever-growing challenges broadcasters face as facilities become larger, more complex and distributed. **MAGNUM** has been designed to unify the control and operation of the routing core, master control, production switching, advanced transport and multiviewer. **MAGNUM** bridges all of the major components within the broadcast path under a single point of control enabling broadcasters to simplify facility workflow and gain efficiency while reducing operational costs.

## Key Benefits

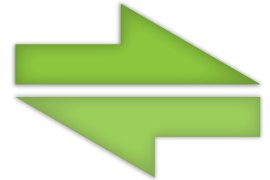
### Robust

Unix based operating system, redundant networking, multi-node cluster with automatic fail over.



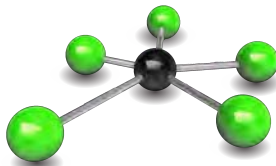
### Centralized Management

Manage all facility names from a single interface. **MAGNUM** will automatically keep everything in sync.



### Unified

Routers, multiviewers and terminal equipment all managed and controlled under a single system.



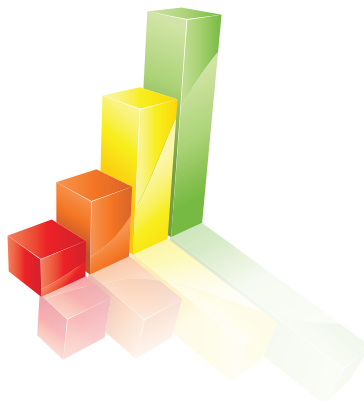
### Access Profiles

Providing each panel and user interface its own customized access to resources.



### Scalable

Dozens of devices, hundreds of panels and control interfaces.



### Seamless Reconfiguration

Make configuration changes while minimizing impact on the operation of the system.



### Web Interface

No software to install. Configure and manage **MAGNUM** from anywhere using only a web browser on your computer or mobile device. One interface to monitor events and filter using web reporting tools.



### 3rd Party Integration

Integrate existing third party systems into one centralized control environment.



# Applications

## Production

Increasingly complex workflows, staffing reductions, as well as size and space constraints are all challenges that media broadcasters face today. At the center of the Evertz Production solution is MAGNUM which unifies the control of all the elements found in production facilities including routing, multiviewers and tally.

### MAGNUM Modules

- Router Control
- Multiviewer
- Tally



## Master Control

Master Control is the heart of any broadcast facility. Demands for reliability, serviceability and signal protection are essential. MAGNUM unifies the control and management of these essential devices by providing robust router, multiviewer and tally interface solutions.

### MAGNUM Modules

- Router Control
- Multiviewer
- Tally
- Script



## Facility

Evertz offers high performance and cost effective solutions that optimize workflow and improve efficiency within the facility. MAGNUM provides a single unified interface for managing and controlling the various systems. Whether the requirement is interfacing for router control, centralized name management, multiviewers or Intelligent signal pathing, MAGNUM is able to simplify the operation.

### MAGNUM Modules

- Router Control
- Names
- Multiviewer
- ISP
- Schedule



## Outside Broadcast

In challenging, quick turn production environments MAGNUM provides a solution for unifying the control of all the elements found in mobile production including routing, multiviewing and tally. Providing a single interface for control and management enables more to be accomplished in less time and effort. A web interface allows changes to be made without being confined to a specific location.

### MAGNUM Modules

- Router Control
- Multiviewer
- Tally

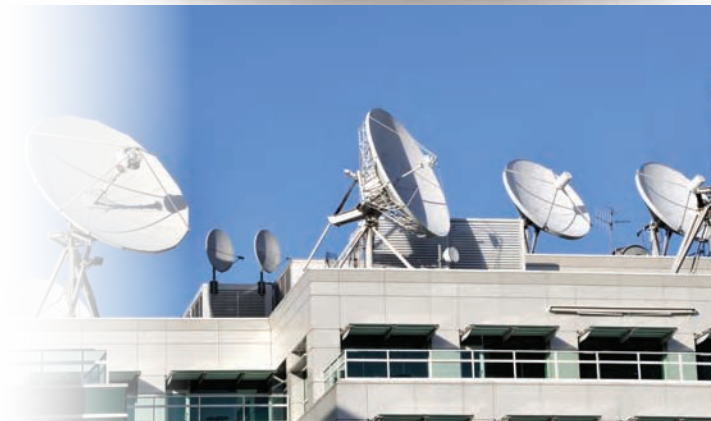


## Transmission/Transport

MAGNUM simplifies the control of inbound or outbound signal process flow using its Intelligent Signal Pathing engine for automatic conversion. Management and routing of IP/optical resources, such as IP fabric or gateways is also simplified by using the familiar source and destination based architecture.

### MAGNUM Modules

- Router Control
- Multiviewer
- Transport
- ISP
- Schedule





# Components

## 1. Routing Core

- Unifies control / interfacing to all Evertz and 3rd party routers
- Central location for controlling Evertz routing products (EQX, Xenon, & IPX), 3rd party routers and router control systems
- Configure and manage systems ranging from single router systems (with 10s of sources / destinations) to large enterprise sized systems (with 1000s of sources / destinations, that utilizes tie-lines)



## 2. Multiviewer

- Unifies control and interfacing to Evertz multiviewers
- Central location for controlling Evertz multiviewer products ( MVP, MVPX, VIPA & VIPX)
- Configure and manage various setup & monitoring parameters from a central web interface
- Update specific multiviewer mnemonics using the Name Application
- Use Maestro design client to create multiviewer layouts
- Provides central storage and recall of the saved layouts



## 3. Master Control & Branding

- Provides centralized management of multiple channel playout for dynamic control and automatic mnemonics



## 7. Control Panels

- Offers dynamic multi-system control to simple button per source panel types
- Variety of choices for router control and interfacing using advanced multi-system panels, LCD re-legendable, or simple button per source interfaces



## 4. Transport

- Simplifying the management and routing of IP/optical based resources within the familiar source and destination baseband architecture
- Enables control for Evertz IP based devices such as Encoders, Decoders, IPX, and IPGs
- Provision, schedule, and manage network and optical bandwidth & pathfinding for Evertz transport



## 6. Tally

- Unifies configuration and management of the tally state and status from discrete devices
- Central location for configuring tally setups for interfacing to switchers, discrete GPIOs, multiviewers, routers, & IMD devices
- Create, save and recall various tally configurations for an event
- Centrally manages and interfaces to Evertz routers and multiviewers
- Reduces configuration time of systems



## 5. Infrastructure

- Intelligent Signal Path finding by dynamically reconfiguring in-line Evertz conversion & processing devices
- Automatic provisioning and configuration of scarce resources thereby minimizing equipment overhead and management requirements
- Using up convert, down convert, and cross-convert devices, MAGNUM's Intelligent Signal Pathing engine dynamically re-purposes the devices based on the conversion requirements of the operator. For example simplifying the conversion process from an incoming SD signal to a HD destination



MAGNUM

FACILITY CONTROL

# Control Panels

## Multi-System Control Panels

Control multiple systems from a single hardware control surface with either the CP-2116E or CP-2232E. These slim, silent and user configurable panels allow users to install apps to interface with routing systems, multiviewers, terminal equipment, logo inserters, Overture RT, keyers, ATP, XRF and clip layers.

### Key Benefits and Features:

- Slim and silent design
- High resolution LCD touch screens
- Web based configuration - no software to install
- Reprogrammable LCD buttons
- Multiple profiles for user based system access and customization



*All multi-system control panels have high resolution LCD touch screens.*



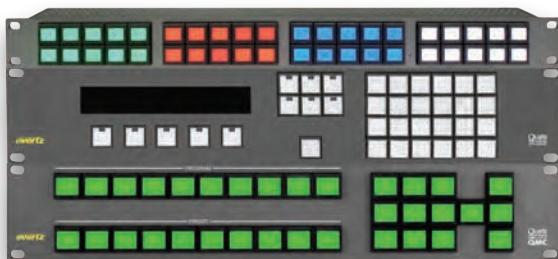
CP-2116E-H in CPH-DBK



CP-2116E with Waveform



CP-2232E



## Router Control Panels

Evertz has a comprehensive range of router control panels to suit any routing needs.

### Features include:

- 1RU or 2RU options
- LCD programmable or fixed buttons
- XY or button per source
- Level break aways
- Joystick interface
- Source chopping
- Programmable menus
- Src/Dst scroll lists or prefix based
- Locks

# Ordering Information

### MAGNUM-ROUTER

Router control / interfacing, router panel hosting, tieline management, and mnemonics software module.

### MAGNUM-MULTIVIEWER

Integrated routing, layout recall, mnemonics with the router, multiviewer software management module.

### MAGNUM-NAMES

Name interchange module for MAGNUM control system. The module facilitates name interchange between Magnum and supported 3rd Party interfaces, allowing for central management of names within a system.

### MAGNUM-TALLY

Software Tally module for MAGNUM control system for gathering tally from production and master control switchers for Program / Preview / Contribution Tally / GPI / GPO.

### MAGNUM-SCRIPT

Script module for MAGNUM control system. Allows customers to create custom scripted actions in MAGNUM such as set cross-points, load multiviewer layouts, set SNMP parameters, etc.

### MAGNUM-SCHEDULE

MAGNUM module that allows scheduling of actions of other installed MAGNUM modules, for example top of the hour routes.

### MAGNUM-ISP

MAGNUM software module to provide Intelligent Signal Path finding. Dynamically reconfigure in-line Evertz conversion and processing devices as required. Thereby minimizing the equipment overhead requirement traditionally needed in a multi format facility.

### MAGNUM-KVM-32

KVM control module for MAGNUM control system. Allows interfacing and control of the Evertz KVM solution using MAGNUM and its supported interfaces. License allows a matrix of 32x32 for KVM devices.

### MAGNUM-ROUTER-R

Redundant software module for MAGNUM-ROUTER. Requires licensed MAGNUM-ROUTER.

### MAGNUM-MULTIVIEWER-R

Redundant software module for MAGNUM-MULTIVIEWER. Requires licensed MAGNUM-MULTIVIEWER.

### MAGNUM-NAMES-R

Redundant software module for MAGNUM-NAMES. Requires licensed MAGNUM-NAMES.

### MAGNUM-TALLY-R

Redundant software module for MAGNUM-TALLY. Requires licensed MAGNUM-TALLY.

### MAGNUM-SCRIPT-R

Redundant Script module for MAGNUM control system. Requires licensed MAGNUM-SCRIPT.

### MAGNUM-SCHEDULE-R

Redundant software module for MAGNUM-SCHEDULE. Requires licensed MAGNUM-SCHEDULE.

### MAGNUM-ISP-R

Redundant software module for MAGNUM-ISP. Requires licensed MAGNUM-ISP.

### MAGNUM-KVM-R

Redundant software module for MAGNUM-KVM. Requires licensed MAGNUM-KVM.

### MAGNUM-HW

1RU Enterprise Class Server for all MAGNUM software modules.



Washington DC Sales  
+1 703-330-8600  
dcsales@evertz.com

New York Sales  
+1 201-337-0205  
newyorksales@evertz.com

US West Coast Sales  
+1 818-558-3910  
uswestsales@evertz.com

UK Sales  
+44 (0) 118-921-6800  
uksales@evertz.com

South-East Europe Sales  
+385 1-2001-665  
SEurope@evertz.com

Dubai Sales  
+971 4-422-9113  
middleeast@evertz.com

Asia Pacific Sales  
+852 2850-7989  
asiapacificsales@evertz.com

Australia Sales  
+61 431-290-409  
australiasales@evertz.com



1-877-995-3700 • sales@evertz.com • www.evertz.com



# VistaLINK<sup>®</sup> PRO

## SNMP MONITORING & CONTROL SOFTWARE



**evertz**

# OVERVIEW

## Network Management and Monitoring

VistaLINK® PRO is an advanced end-to-end network management system (NMS) for the broadcast, cable, satellite, and IPTV industry. VistaLINK® PRO provides a single interface to manage the entire operational ecosystem to allow for reduction in operational expenditures (OPEX) and increase in quality of service.

VistaLINK® PRO enables operators to monitor and manage complex system more effectively than before. VistaLINK® PRO offers a wide range of functionality including web access, fault management, configuration management, alarm/event notification, report and log management, intelligent correlation and root cause analysis, user-defined graphic views/dashboards, scheduling and automation, auto-response, and much more.





# FEATURES

## End-to-End Monitoring

Most comprehensive end-to-end facility and signal monitoring and management system for broadcasters and service providers.



## Intuitive User Interface

A rich graphics interface allows operators to customize dashboards to span entire operational environments in order to quickly identify problem areas and reduce MTTR.



## Configuration Management

Complete configuration and setup for all Evertz products and third party devices.



## Monitoring by Exception

Integrated with Evertz multi-viewer products to provide "penalty box" and channel cycling.



## Alarm/Event Notification

Centralized alarm logging and management with visual, email and log notification types.



## Root Cause Analysis

Suppress downstream alarms and highlight root cause errors to pinpoint the source of service outages.



## Scalable Architecture

Scale from small single channel systems to large scale enterprise systems that have 1000's of services.



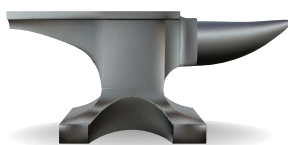
## Third Party Support

Has support of hundreds of third party devices.



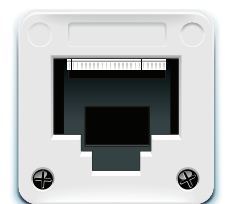
## Redundancy

Redundancy model that is fault tolerant and has high-availability.



## Full SNMP Support

Full support for SNMP v1, v2c and v3 as well as TCP/IP, Web Service XML/JSON and legacy serial/GPIO protocols.

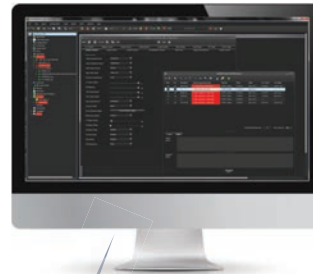


# COMPONENTS

Alarm Log  
Management



Configuration Client  
(VLPRO-C, VLPRO)

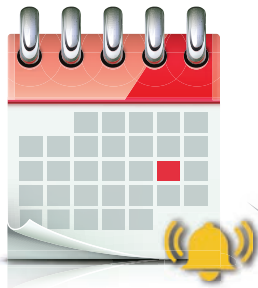


Basic Package



HTTP Client (+WEB)

Auto Response &  
Schedule Client (+SCH)



Alarm Server with  
Redundancy (+RSERV)



Graphics GUI Client  
(VistaLINK® PRO PLUS)



Infrastructure



Control Panels





### Alarm Log Management

VistaLINK provides full SNMP based alarm monitoring with network element fault alarm notification and logging. VistaLINK offer fault redundancy configuration and triggering as well as autoResponse scripting integration for advanced redundancy scenarios.



### Configuration Client

VistaLINK provides full SNMP based alarm monitoring with network element fault alarm notification and logging. VistaLINK offer fault redundancy configuration and triggering as well as autoResponse scripting integration for advanced redundancy scenarios.



### Graphics GUI Client

The VistaLINK® PRO-PLUS graphical client system allows limitless graphical dashboard interface screens to be designed and linked together to provide an enterprise level graphical network monitoring solution. Graphical NMS monitoring pages expose device and signal faults better and provide faster visual fault impact and cause analysis.



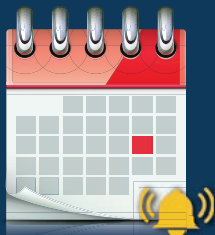
### HTTP Client (+WEB)

Unlock the capability of a remote system or facility health monitoring solution through VistaLINK® PRO + WEB clients. Go beyond a firewall to monitor your facility conveniently through a standard Internet browser application. The VistaLINK® PRO Web Gateway allows graphical systems created with VLPRO-PLUS to be served out (in HTML format) through a bundled Web Server, allowing users to connect using standard browsers for operational access. The Web Gateway solution provides a convenient method for isolating client connections from an internal managed hardware network.



### Redundancy (+RSERV)

Due to the high reliability requirements of today's management systems, Evertz offers the ability to setup VistaLINK® PRO in a fault tolerant high availability Master/Slave redundancy model. When VistaLINK® PRO Server is configured in a redundant mode it will manage failovers internally and redirect client connections automatically.



### Scheduling and Auto-Response (+SCH)

Due to the high reliability requirements of today's management systems, Evertz offers the ability to setup VistaLINK® PRO in a fault tolerant high availability Master/Slave redundancy model. When VistaLINK® PRO Server is configured in a redundant mode it will manage failovers internally and redirect client connections automatically.

# APPLICATIONS

## Where to use VistaLINK®?

VistaLINK® PRO is ideal for end-to-end network management system (NMS) for the broadcast, cable, satellite, and IPTV industry. VistaLINK® PRO as an advanced NMS offers a number of benefits, such as:

- Lower OPEX by improving operator efficiency
- Reduce Mean-time-to-repair (MTTR) and improve service levels
- Proven and mature management system
- Standardized software across entire facility
- Manage system resources more efficiently
- Deploy new technologies faster and at lower costs







## Task Oriented Workflows

The combination of VistaLINK® PRO and Evertz' VUE optimizes task oriented workflow. VUE is a consolidated control client with near field monitoring and advanced control capabilities. With VistaLINK® specific widgets, VUE provides operators a consolidate view of the system with graphical dashboards, controls, alarms and high quality video (compressed and/or uncompressed). This integrated operator workstation is ideal for: hub and spoke multi-channel playout facilities, headend network operations centers, facility monitoring, transmission departments, remote monitoring, and quality control for content origination.

## VistaLINK® CSM



Evertz Compression System Manager (CSM) is a complete compression network provisioning, monitoring and management solution for configuring Evertz full range of head end and broadcast digital video compression products. VistaLINK® CSM provides a service oriented view of the network coupled with a rich toolset in order to provide easy and intuitive management of compressed digital audio video services and networks.

Evertz CSM management software provides a graphical user interface for building and managing encoder and transcoder networks. The client software offers easy to use tools for creating network topologies, building service channel lineups, provisioning services through network elements as well as monitoring the health of the hardware elements, configured services and overall network.

## VistaLINK® IRM

VistaLINK® Intelligent Resource Management (IRM) software solution was developed for optimizing and reducing errors and complexity of day to day operational scheduling and control of live, sports and news events. VistaLINK® IRM will assist transmission operation center (TOC) operators in scheduling events and assets, reserving devices, configuring signal paths and configuring broadcast devices within those paths. VistaLINK® IRM allows a customer to intelligently manage pooled hardware resources, such as receivers and processing modules, which are connected to a central core router.



# ORDERING

<b>VLPRO-C</b>	VistaLINK® PRO SNMP configuration-only application software - Free with all Evertz® VistaLINK® controlled modules
<b>VLPRO</b>	VistaLINK® PRO SNMP alarm monitoring and module configuration application software (for 1 client station with 1 year maintenance support)
<b>VLPRO PLUS</b>	VistaLINK® PRO PLUS SNMP alarm monitoring, with customizable graphics mapping support and module configuration application software (for 1 client station with 1 year maintenance support)

## Ordering Options

<b>+SCH</b>	VistaLINK® PRO automated configuration, scripting & scheduling application software option
<b>+RSERV</b>	Redundant VistaLINK® PRO server
<b>+TSERV</b>	Thumbnail Server option
<b>+TPD</b>	Third Party TRAP monitoring option
<b>+WEB-1</b>	Remote site VistaLINK® system monitoring client (1) using Internet browser
<b>+WEB-5</b>	Remote site VistaLINK® system monitoring client (5) using Internet browser

## Upgrade Options

<b>VLPRO PLUS</b>	Upgrade existing VistaLINK® PRO client to VistaLINK® PRO PLUS (1 client, 1 year)
<b>VLPRO-SCH</b>	Upgrade existing VLPRO to include automated configuration & scheduling software
<b>VLPRO-WEB1</b>	Upgrade for existing VLPRO to include remote site VistaLINK® system monitoring

## Training & Yearly Subscriptions

### VLPRO Set-up/VLPRO Training

VistaLINK® configuration & training session (per Diem)

### VLPRO-SER/SUP/LIC 1, 2 or 3 Year

Extra 1, 2 or 3 year VistaLINK® PRO PLUS license & support per client

#### HEAD OFFICE

**Canada**  
5292 John Lucas Drive  
Burlington, Ontario  
Canada - L7L 5Z9

1-905-335-3700  
1-877-995-3700  
sales@evertz.com  
**www.evertz.com**

#### INTERNATIONAL

**Washington DC Sales**  
+1 703-330-8600  
dcsales@evertz.com

**South-East Europe Sales**  
+385 1-2001-665  
SEuropesales@evertz.com

**New York Sales**  
+1 201-337-0205  
newyorksales@evertz.com

**Dubai Sales**  
+971 4-422-9113  
middleeastsales@evertz.com

**US West Coast Sales**  
+1 818-558-3910  
uswestsales@evertz.com

**Asia Pacific Sales**  
+852 2850-7989  
asiapacificsales@evertz.com

**UK Sales**  
+44 (0)118-921-6800  
uksales@evertz.com

**Australia Sales**  
+61 431-290-409  
australiasales@evertz.com

**Germany/Austria Sales**  
+49 89-21552388-1  
vertrieb@evertz.com

**India Sales**  
+91 11-4174-8889  
SouthAsiaSales@evertz.com

**WWW.EVERTZ.COM**



**1-877-995-3700**





# OVERVIEW



## Create. Manage. Deliver.

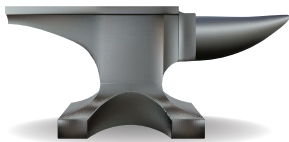
Mediator is Evertz content management and workflow solution for smarter media publishing. Mediator addresses the ever-changing business and operational needs for delivering linear and non-linear content and distribution. With growing demands for TV Everywhere (at home, on the web, and on the phone/tablet), media organizations need a flexible and adaptable software application that can efficiently and cost-effectively deliver content to consumers. Mediator helps media organizations monetize media assets by managing resources and operations to deliver multi-channel, multi-platform and multi-language content anytime, anywhere.



# KEY FEATURES

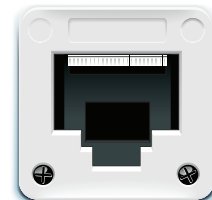
## Robust

Unix-based operating system, with active-active server and database architectures for high availability and reliability.



## Web Interface

Centrally manage material using Web Services API to gain access to materials and tasks from any desktop location.



## Customizable

Fully customizable workflow logic that is user configurable to meet business needs.



## Elasticity

Dynamically reshape, expand, and contracts service provisions to meet demand.



## Agnostic

Mediator operates on Evertz optimized IT hardware to meet broadcast and media demands, commercially available off-the-shelf servers or on virtualized IT platforms.



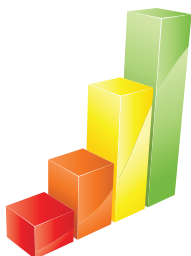
## Flexible

Flexible architecture for customizable workflows from library management to ingest (tape, file or live) to QC and store management to delivery on multi-platforms, multi-channels, with multi-languages.



## Scalable

Modular architecture provides scalability from a single user to thousands of users, material processed and support for multiple site locations.



## 3rd Party Interfacing

Seamless integration with 3rd party systems and devices including business systems (via Mediator API/ BXF / PXF), auto QC, transcoders, storage and NLEs.



## Rich Metadata

Captures and stores media assets along with technical and descriptive metadata, which allows for unprecedented searching, cataloguing, and automated workflows.



## Dashboards and Reporting

Provides resource and infrastructure efficiency through reports and live dashboards including advanced business reporting tools.



## Access Profiles

Use Mediator to manage multiple libraries on shared resources with defined user roles and tasks.

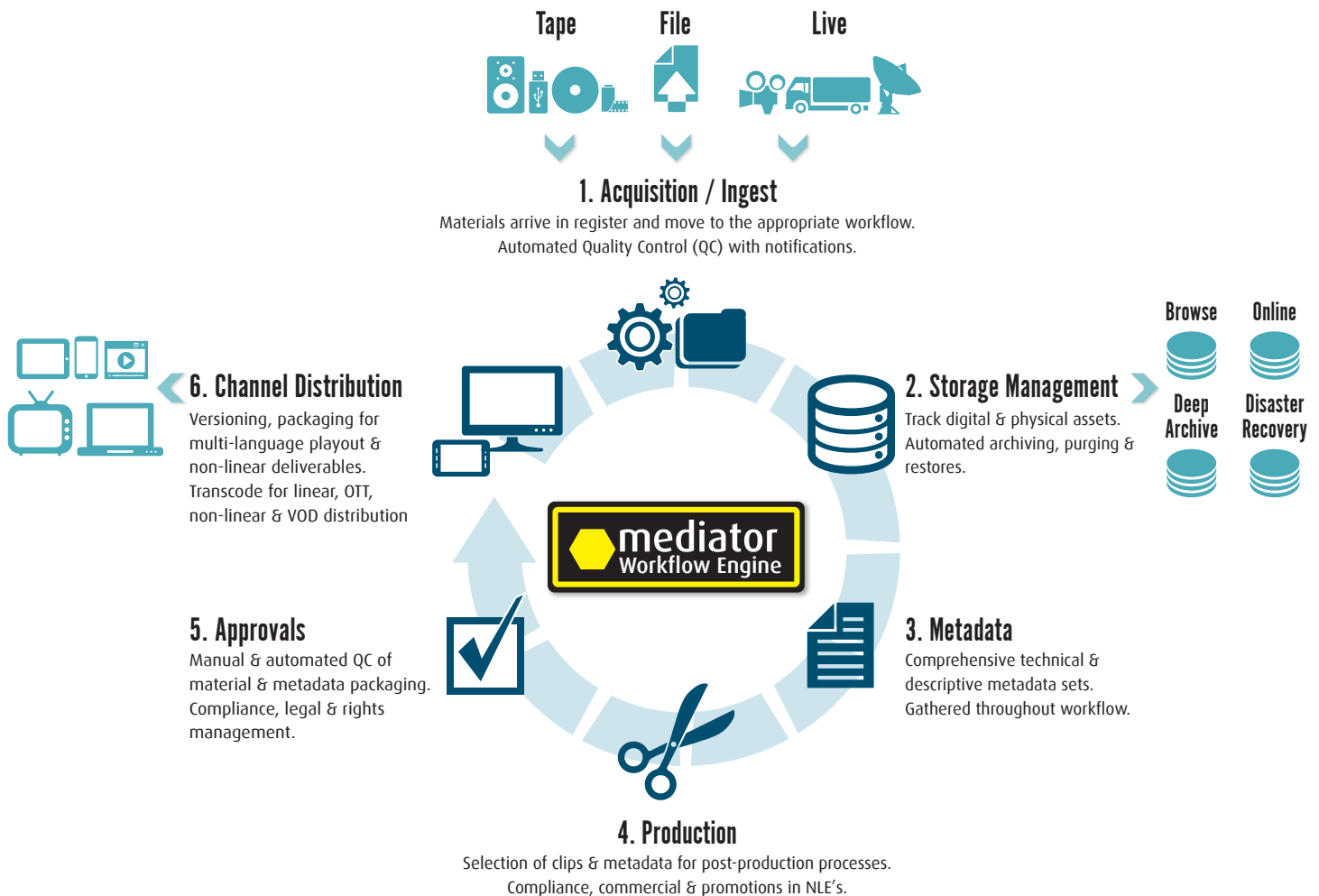


## Federated Search

Scales across multiple locations to provide aggregate and federated search and reporting.



# WORKFLOW DRIVEN ARCHITECTURE



Mediator's architecture is based on a number of key principles which allows Mediator to provide an optimized workflow to meet business' objectives for delivering content. Mediator ensures that the right content is in the right place, at the right time, with "built-in" quality.

**Mediator is based on the following principles:**



**Decisions are driven by business systems.**

Mediator uses business priorities and channel management systems (rights management, scheduling, traffic, etc.) to define workflow decisions.



**Manage how and when media moves through workflow.**

Mediator manages the file flow through the workflow engine. This allows operations to focus on the task at hand, rather than how/when to obtain material.



**Apply rules, profiles and decisions as workflow tasks.**

Mediator establishes preset workflows and applies rules to automate workflows in order to remove costly manual processes.



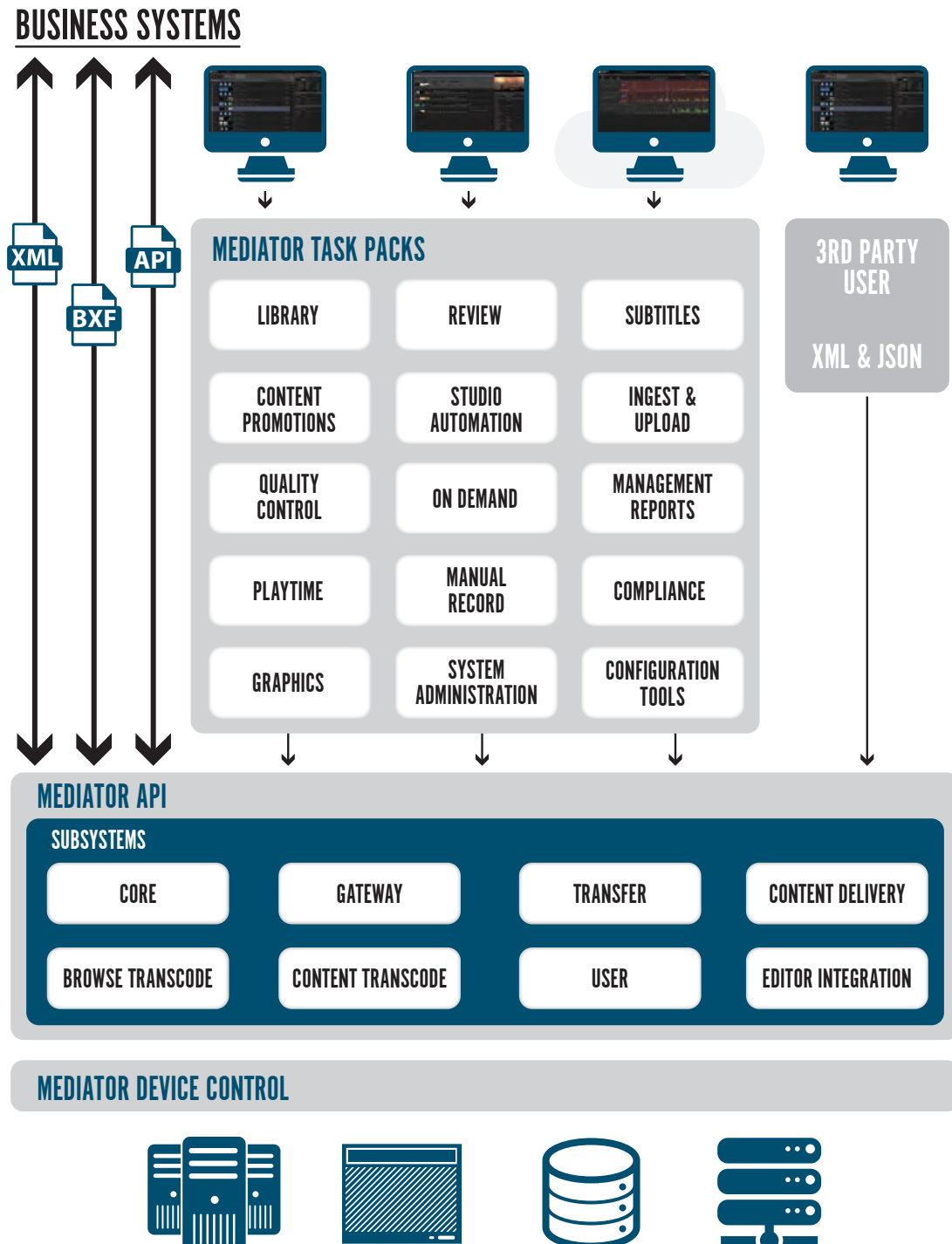
**Prioritize based on rules.**

Mediator prioritizes file flows and virtual queues through the workflow engine to gain greater efficiency of operations while maximizing business objectives.

As a result, Mediator maintains an "ingest once, use everywhere" philosophy that enables a high volume "in" and "out" workflow engine.

# MODULAR

Mediator utilizes a web service API to access subsystems, including Mediator's own web based user interface, as well as an interface for 3rd party platforms. This approach optimizes Mediator's flexibility allowing the user to access Mediator from multiple remote locations and enabling direct interfacing for business systems. Mediator is built on scalable subsystems that provide a highly scalable architecture.

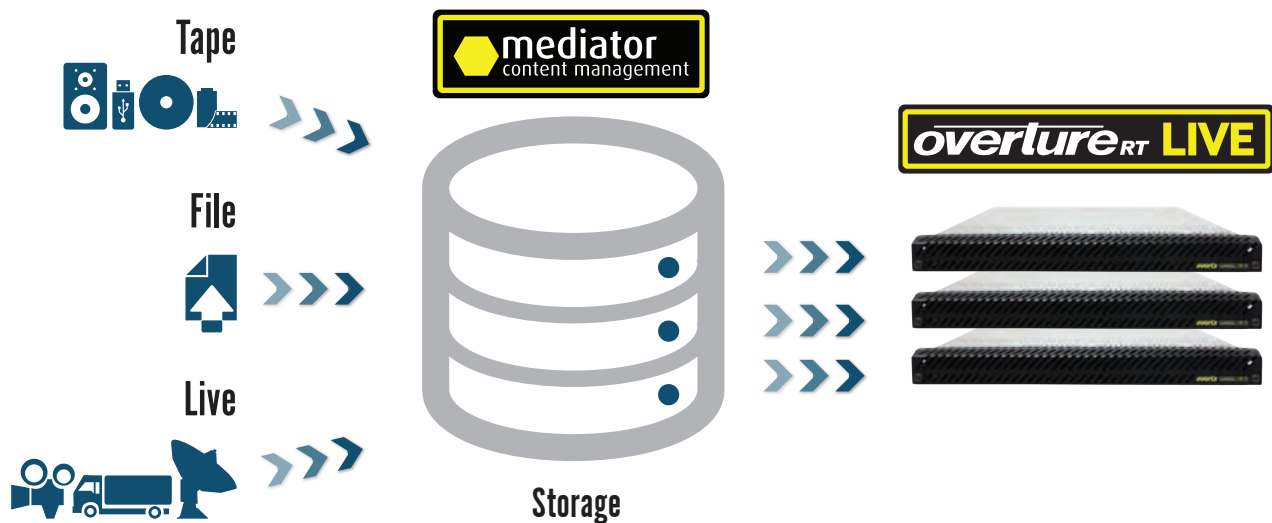


# APPLICATIONS

Mediator can scale to meet your business needs, including small to large multi-channel playout and distribution models that allow broadcasters and service providers to manage content across multiple locations, with multiple languages and multiple platforms. Mediator-X and Live-X are applications that exhibit the immense flexibility of the system as outlined below:

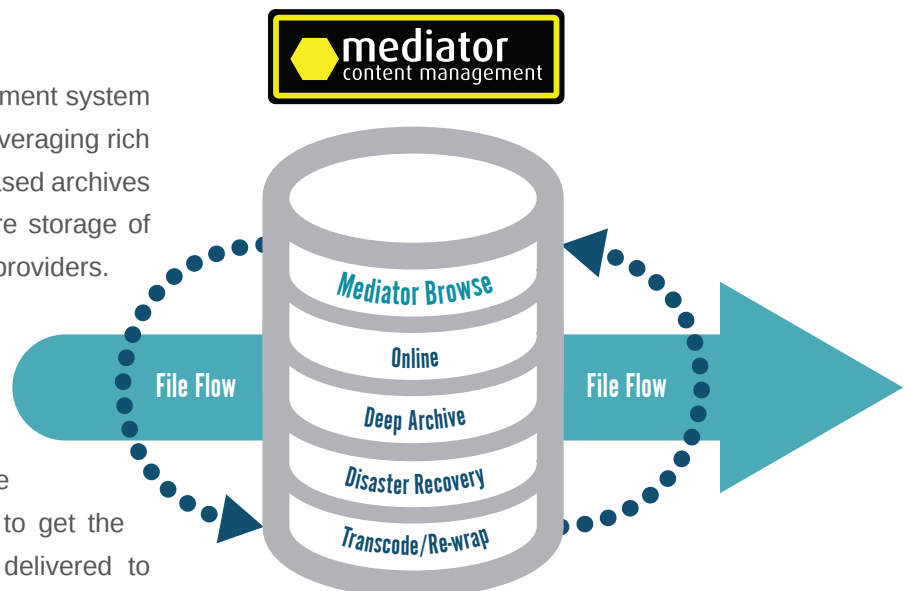
## Multi-Channel Playout

Mediator's Playtime module allows broadcasters, service providers, affiliates and clients to collaborate for playout and publishing operations as never before. Using Playtime, the multi-channel automation option for Mediator, broadcasters and service providers can publish multi-format content far beyond traditional television channels. Playtime is integrated with OvertureRT LIVE to provide channel playout (with advanced branding capabilities) that scales from a single-channel application to a large multi-channel playout facility.



## Storage Management

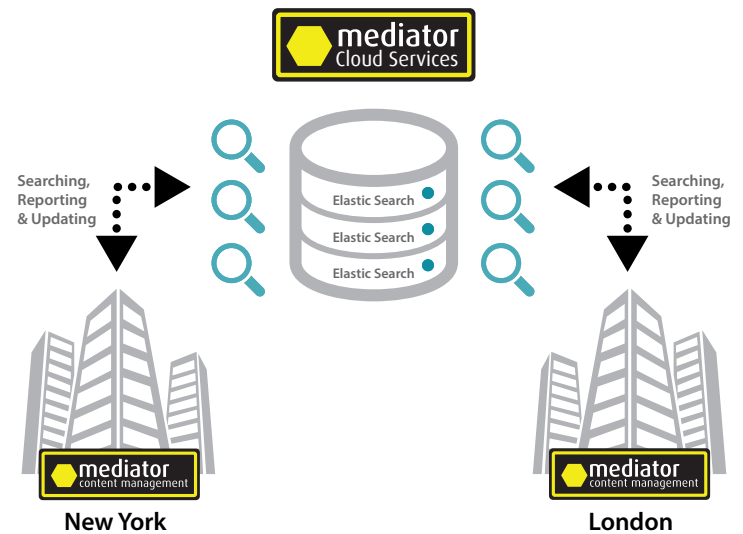
Mediator is an advanced media asset management system ideal for broadcaster and service providers. Leveraging rich metadata, Mediator integrates tape and disk-based archives to provide cost effective, long term and secure storage of content for broadcasters and services providers. Mediator's proven transfer platform balances the long term storage requirements of a customer's channels and services with the demands of day to day and often hour by hour business priorities. Mediator manages the available network and processing bandwidth to get the right file from the archive, transcoded and delivered to multiple publishers at the right time.





## Mediator-X Cloud Services

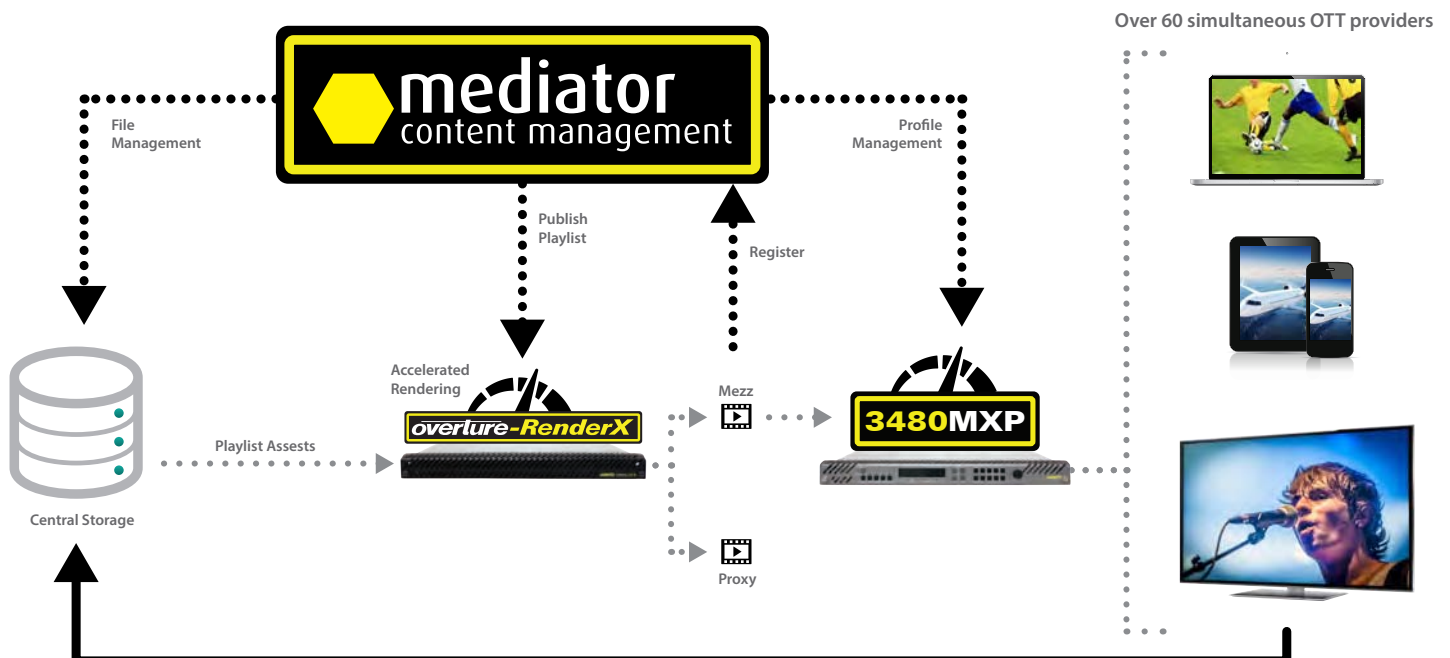
Mediator-X allows for the creation of global content management systems by leveraging cloud services. Utilizing Mediator's data center ready architecture, Mediator-X scales across regions, multiple geographical locations and supports multiple languages and platforms. Mediator-X provides the elasticity to process hundreds of thousands jobs by dynamically allocating virtual resources (via private or public cloud) and off-loading tasks during peak capacity across a global network.



## LIVE-X: Video-on-demand, Transcoding, and Playlist Pre-Rendering

Evertz' LIVE-X architecture is specifically designed to meet the high demand for content creators and distributors to cost effectively create, package and deliver an exponentially growing number of assets to an ever increasing number of delivery platforms and consumer devices. LIVE-X is a "faster than real-time" architecture that leverages Evertz SDVN and 10GbE technology to increase operational efficiency and reduce time-to-market for high throughput video-on-demand (VOD) asset generation. LIVE-X achieves this by simultaneously generating high resolution asset, low-resolution proxies, and parallel generation of multiple profiles for different platforms.

For linear channels, the LIVE-X architecture provides an automated process for "faster than real-time" channel origination with automated quality control (QC) thereby eliminating the need for costly and time consuming "look ahead" channels.



# MEDIATOR TASK PACKS

Part Number	Quote Description	Long Description
MPAC2102	Mediator VT Ingest Workflow	Enable system Ingest from VTR sources. Includes Spot Check task.
MPAC2221	Mediator File Upload Workflow	Enable system Ingest from File based sources. This includes: Management of submitted upload jobs, post upload actions, upload dashboard, Spot Check task.
MPAC2105	Mediator Auto QC Workflow	Enable integration of Mediator tasks with Third Party Auto QC solutions.
MPAC2224	Mediator Standards and Practices Workflow	Enable the cross material tracking of version types within the episode hierarchy.
MPAC2109	Mediator Promotions Management Workflow	Enable promotions management workflow. This includes: Project commissioning, Partial clips selection from proxy, Metadata attachment, NLE submission.
MPAC2113	Mediator Compliance Markup Workflow	Enable mark-up of Master version to be edited for compliance. Includes UI task with licence for comment version types, used to track different reasons for compliance decisions. Integrates with browse proxy or high resolution review.
MPAC2121	Mediator Approval Workflow	Enables manual approvals within a Mediator workflow. Task includes support for: Comments, Markers, Segmentation and Data Element addition to the material.
MPAC2122	Mediator Material Export Workflow	Enable ad-hoc export of materials.
MPAC3100	Mediator Series Episode and Licence Registration Workflow	Enable hierarchical relationships between program related metadata structure within the Mediator database. The relationship is 4 levels – Brand → Series → Episode → Material.
MPAC2124	Mediator Placing Registration and Publishing Workflow	Core licence for non-linear distribution workflows. Includes: Placing registration, pre-roll, publish and tear down tasks, and dashboards.
MPAC2108	Mediator Operations Supervisor Workflow	This includes: Owner administration, Tag administration, Person administration, Location administration, Missing/Not Available Reporting, Job dashboards.
MPAC2123	Mediator System Administration	Includes: User Administration, Role Administration, Workstation Administration, manual request, manual delete tasks.
MPAC2119	Mediator Subtitle Workflow	Enable processing of Subtitle files through the Mediator workflow.
MPAC2120	Mediator Graphics Management Workflow	Enable processing of Graphics files through a Mediator workflow.
MPAC2125	Mediator Placing Approval Workflow	Enable an approval task to be applied to the placing (non-linear) workflows provided in Placing Registration and Publishing Workflow.
MPAC2116	Multi-Language Audio and Subtitle tagging - per language	Provides tracking in the system for language tags against audio and subtitle components.

## HEAD OFFICE

**Canada**  
5292 John Lucas Drive  
Burlington, Ontario  
Canada - L7L 5Z9  
  
1-905-335-3700  
1-877-995-3700  
sales@evertz.com  
www.evertz.com

## INTERNATIONAL

**Washington DC Sales**  
+1 703-330-8600  
dcsales@evertz.com

**New York Sales**  
+1 201-337-0205  
newyorksales@evertz.com

**US West Coast Sales**  
+1 818-558-3910  
uswestsales@evertz.com

**UK Sales**  
+44 (0)118-921-6800  
uksales@evertz.com

**Germany/Austria Sales**  
+49 89-21552388-1  
vertrieb@evertz.com

**South-East Europe Sales**  
+385 1-2001-665  
SEuropesales@evertz.com

**Dubai Sales**  
+971 4-422-9113  
middleeastsales@evertz.com

**Asia Pacific Sales**  
+852 2850-7989  
asiapacificsales@evertz.com

**Australia Sales**  
+61 431-290-409  
australiasales@evertz.com

**India Sales**  
+91 11-4174-8889  
SouthAsiaSales@evertz.com



EXCLUSIVE REPRESENTATIVE:





**PHASE Engenharia Ind. e Com. Ltda.**

Av. Olegário Maciel 231, Lojas 101 a 105  
Barra da Tijuca | Rio de Janeiro, RJ | CEP 22 621 200  
Tel +55.21.2493.0125

Av. Ibirapuera 2.907, Conj. B306 & 7 - Ed. Conv. Corp. Plaza – Torre C  
Indianópolis | São Paulo-SP | CEP 04029-200  
Tel +55 11 3589-0125

[phase@phase.com.br](mailto:phase@phase.com.br) | [www.phase.com.br](http://www.phase.com.br)