

RF COMPONENTS

Band Pass Filters and RF Components



RF Components for PAL BG, NTSC MN, ATSC, ATSC3.0 DVB-T/H,
DVBT-2 and ISDB-T/Tb
Designed to optimum Performance And Compatible With All
Manufacturers Equipment
Available in UHF IV/V and VHF Band I and Band III

Specifications

300W VHF 4 POLE FILTER (ATV)



Features

- Tunable within entire VHF range
- Temperature Compensated
- High Q Coax Technique
- Low Loss
- Customization available

Model	BPF-VIII-4-300	
Part Number	2000511.01	
Frequency Range	170 ~ 230 MHz	
Power Capability	300W Average	
Bandwidth	6, 7, and 8 MHz	
Insertion Loss	170MHz	230MHz
f(0)	$3 \leq 0.25\text{dB}$	$\leq 0.3\text{dB}$
f(0) +/- 8 MHz	$\leq 15\text{dB}$	$\leq 15\text{dB}$
f(0) +/- 12 MHz	$\geq 40\text{dB}$	$\geq 40\text{dB}$
VSWR	≤ 1.1	
Temperature Stability	$\leq 1\text{KHz/K}$	
Operating Temperature	$-10^{\circ}\text{C} \sim +50^{\circ}\text{C}$	
Operating Humidity	5% ~ 95%	
Connectors	DIN 7/16 and EIA 1 5/8"	
Dimensions	175 x 175 x 229mm (6.9" x 6.9" x 9.0")	
Weight	5kg (11LBS)	



Specifications

600W VHF 6 POLE FILTER (ATV / DTV)



Features

- Tunable within entire VHF range
- Temperature Compensated
- High Q Coax Technique
- Low Loss
- Customization available

Model	BPF-VIII-4-300
Part Number	200515.01
Number of Poles	6
Frequency Range	56 ~ 84 MHz
Power Capability	1500W Average
Bandwidth	6, 7, and 8 MHz
Insertion Loss	
$f(0)$	$\leq 0.35\text{dB}$
$f(0) \pm 3 \text{ MHz}$	$\leq 0.7\text{dB}$
$f(0) \pm 4 \text{ MHz}$	$\geq 5.9\text{dB}$
$f(0) \pm 4.5 \text{ MHz}$	$\geq 11.7\text{dB}$
$f(0) \pm 5 \text{ MHz}$	$\geq 18\text{dB}$
$f(0) \pm 5.5 \text{ MHz}$	$\geq 25\text{dB}$
$f(0) \pm 6 \text{ MHz}$	$\geq 30\text{dB}$
$f(0) \pm 9 \text{ MHz}$	$\geq 55\text{dB}$
In Band Response	$\leq 0.55\text{dB}$
VSWR	≤ 1.15
Group Delay	$\leq 200\text{nS}$
Temperature Stability	$\leq 1\text{KHz} / \text{K}$
Coupler (if applicable)	50 +/- 0.5dB
Operating Temperature	-25 °C ~ +75 °C
Operating Humidity	5% ~ 95%
Connectors	EIA 1 5/8"
Dimensions	822 x 517 x 400mm (33" x 20" x 16")
Weight	25kg (55LBS)

Specifications

1kW VHF 4 POLE FILTER (ATV)



Features

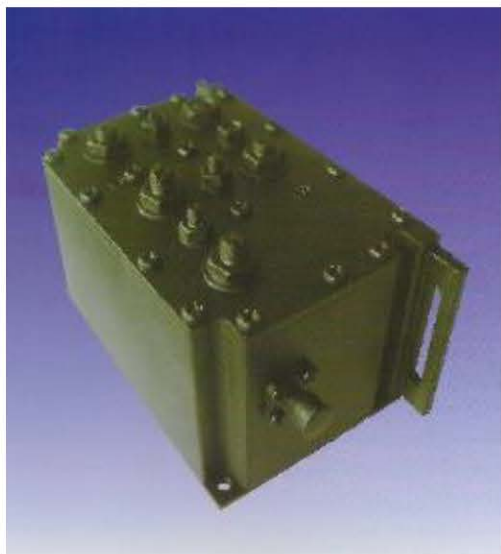
- Tunable within entire VHF range
- Temperature Compensated
- High Q Coax Technique
- Low Loss
- Customization available

Model	BPF-VIII-4-1K	
Part Number	200520.01	
Frequency Range	170 ~ 230 MHz	
Power Capability	1000W Average	
Bandwidth	6, 7, and 8 MHz	
Insertion Loss	170MHz	230MHz
f(0)	$3 \leq 0.2\text{dB}$	$\leq 0.25\text{dB}$
f(0) +/- 8 MHz	$\leq 15\text{dB}$	$\leq 15\text{dB}$
f(0) +/- 12 MHz	$\geq 40\text{dB}$	$\geq 40\text{dB}$
VSWR	≤ 1.1	
Temperature Stability	$\leq 1\text{KHz/K}$	
Operating Temperature	$-10^{\circ}\text{C} \sim +50^{\circ}\text{C}$	
Operating Humidity	5% ~ 95%	
Connectors	DIN 7/16 and EIA 1 5/8"	
Dimensions	212 x 212 x 608mm (8.3" x 8.3" x 24")	
Weight	5kg (11LBS)	



Specifications

10W UHF 5 POLE FILTER (DTV)



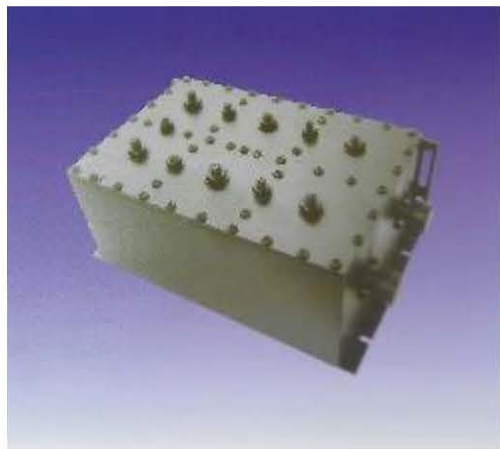
Model	BPF-U-5-10
Part Number	200543.04
Frequency Range	470 ~ 862 MHz
Power Capability	10W Average
Bandwidth	6, 7, and 8 MHz
Insertion Loss	
f(0)	≤ 1.2dB
f(0) +/- 8 MHz	≤ 1.4dB
f(0) +/- 12 MHz	≥ 35dB
VSWR	≤ 1.15
Temperature Stability	≤ 400KHz/K
Operating Temperature	-25 °C ~ +75 °C
Operating Humidity	5% ~ 95%
Connectors	SMA-F
Dimensions	91 x 62 x 56mm (3.6" x 2.4" x 2.2")
Weight	<3kg (6.6LBS)

Features

- Tunable within entire VHF range
- Temperature Compensated
- High Q Coax Technique
- Low Loss
- Customization available

Specifications

50W UHF 6 POLE FILTER (DTV)



Features

- Suitable for ATV and DTV
- Tunable within entire UHF range
- Temperature Compensated
- High Q Coax Technique
- Low Loss and VSWR
- Customization available

Model	BPF-U-6-50
Part Number	200543.01
Frequency Range	470 ~ 806 MHz
Power Capability	50W Average
Bandwidth	6, 7, and 8 MHz
Insertion Loss	
$f(0)$	$\leq 0.9\text{dB}$
$f(0) \pm 3.8 \text{ MHz}$	$\leq 1.6\text{dB}$
$f(0) \pm 6.0 \text{ MHz}$	$\leq 1.8\text{dB}$
$f(0) \pm 12 \text{ MHz}$	$\geq 40\text{dB}$
VSWR	≤ 1.2
Group Delay Ripple	$\leq 250\text{nS}$
Directional Coupler	50 \pm 0.5dB
Operating Temperature	-20° C ~ +75° C
Connectors	'N' Type
Dimensions	180 x 260 x 100mm (7.1" x 10" x 4")
Weight	<3.8kg (8.4LBS)

Specifications

100W UHF 6 POLE FILTER (DTV)



Features

- Suitable for ATV and DTV
- Tunable within entire UHF range
- Temperature Compensated
- High Q Coax Technique
- Low Loss and VSWR
- Customization available

Model	BPF-U-6-100
Part Number	200501.01
Frequency Range	470 ~ 806 MHz
Power Capability	100W Average
Bandwidth	6, 7, and 8 MHz
Insertion Loss	
$f(0)$	$\leq 0.9\text{dB}$
$f(0) \pm 3.8 \text{ MHz}$	$\leq 1.6\text{dB}$
$f(0) \pm 6.0 \text{ MHz}$	$\leq 1.8\text{dB}$
$f(0) \pm 12 \text{ MHz}$	$\geq 40\text{dB}$
VSWR	≤ 1.2
Group Delay Ripple	$\leq 250\text{nS}$
Directional Coupler	50 \pm 0.5dB
Operating Temperature	-20° C ~ +60° C
Connectors	'N' Type
Dimensions	210 x 320 x 130mm (8.3" x 13" x 5.1")
Weight	<4.5kg (9.9LBS)



Specifications

200W UHF 6 POLE FILTER (DTV)



Features

- Suitable for ATV and DTV
- Tunable within entire UHF range
- Temperature Compensated
- High Q Coax Technique
- Low Loss and VSWR
- Customization available

Model	BPF-U-6-200
Part Number	200507.01
Frequency Range	470 ~ 806 MHz
Power Capability	200W Average
Bandwidth	6, 7, and 8 MHz
Insertion Loss	
$f(0)$	$\leq 0.6 \sim 0.7\text{dB}$
$f(0) \pm 3.8 \text{ MHz}$	$\leq 1.4\text{dB}$
$f(0) \pm 6.0 \text{ MHz}$	$\leq 35\text{dB}$
$f(0) \pm 12 \text{ MHz}$	$\geq 40\text{dB}$
VSWR	≤ 1.2
Group Delay Ripple	$\leq 250\text{nS}$
Directional Coupler	50 \pm 0.5dB
Operating Temperature	-15° C ~ +65° C
Connectors	7-16 DIN Type
Dimensions	250 x 380 x 190mm (9.8" x 15" x 7.5")
Weight	<5kg (11LBS)

Specifications

500W UHF 6 POLE FILTER (DTV)



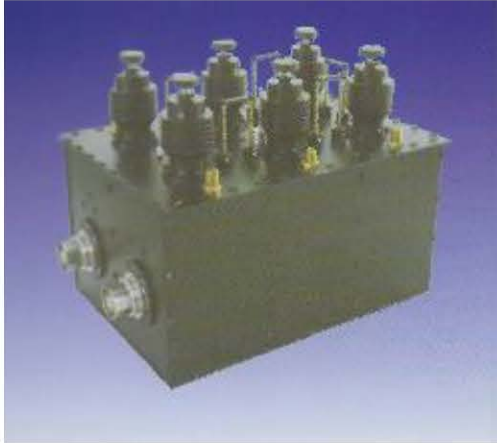
Features

- Suitable for ATV and DTV
- Two filters required for UHF range
- Temperature Compensated
- High Q Coax Technique
- Low Loss and VSWR
- Customization available

Model	BPF-U-6-500	
Part Number	200513.01	
Frequency Range	470 ~ 862 MHz	
Power Capability	500W Average	
Bandwidth	6, 7, and 8 MHz	
Insertion Loss	474MHz	862MHz
f(0)	≤ 0.45dB	≤ 0.7dB
f(0) +/- 3.8 MHz	≤ 1.0dB	≤ 1.4dB
f(0) +/- 4.2 MHz	≥ 4.2dB	≥ 4.2dB
f(0) +/- 6 MHz	≥ 20dB	≥ 20dB
f(0) +/- 12 MHz	≥ 35dB	≥ 40dB
VSWR	≤ 1.1	
Group Delay Ripple	≤ 250nS	
Directional Coupler	50 +/- 0.5dB	
Operating Temperature	-15° C ~ +65° C	
Temperature Stability	≤ 2KHz/k	
Connectors	7-16 DIN Type (1 5/8" EIA optional)	
Dimensions	264 x 234 x 372mm (10.4" x 9" x 15")	
Weight	<4kg (8.8LBS) <6kg (12.8LBS)	

Specifications

1kW UHF 6 POLE FILTER (DTV)



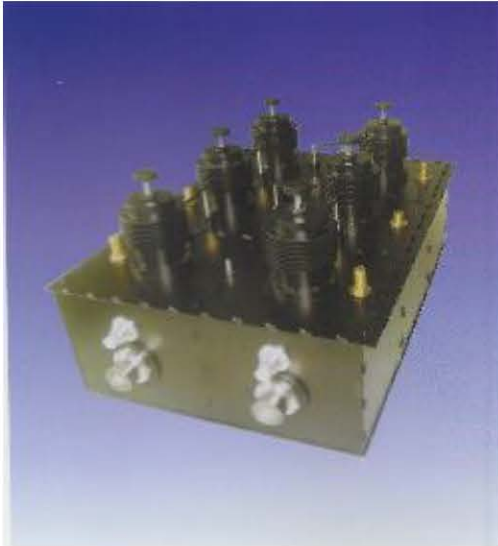
Features

- Suitable for ATV and DTV
- Tunable within entire UHF range
- Temperature Compensated
- High Q Coax Technique
- Low Loss and VSWR
- Customization available

Model	BPF-U-6-1KW	
Part Number	200519.01	
Frequency Range	470 ~ 862 MHz	
Power Capability	1000W Average	
Bandwidth	6, 7, and 8 MHz	
Insertion Loss	470MHz	862MHz
$f(0)$	$\leq 0.35\text{dB}$	$\leq 0.5\text{dB}$
$f(0) \pm 3.8 \text{ MHz}$	$\leq 0.9\text{dB}$	$\leq 1.5\text{dB}$
$f(0) \pm 4.2 \text{ MHz}$	$\geq 4\text{dB}$	$\geq 4\text{dB}$
$f(0) \pm 6.0 \text{ MHz}$	$\leq 35\text{dB}$	$\leq 35\text{dB}$
$f(0) \pm 12 \text{ MHz}$	$\geq 40\text{dB}$	$\leq 40\text{dB}$
VSWR	≤ 1.2	
Group Delay Ripple	$\leq 300\text{nS}$	
Directional Coupler	50 \pm 0.5dB	
Operating Temperature	$-10^{\circ}\text{C} \sim +50^{\circ}\text{C}$	
Operating Humidity	5% ~ 95%	
Connectors	1 5/8" EIA Type	
No. of Poles/Cavities	6	
Dimensions	335 x 466 x 416mm (13" x 18.5" x 17")	
Weight	<20kg (44LBS)	

Specifications

3kW UHF 6 POLE FILTER (DTV)



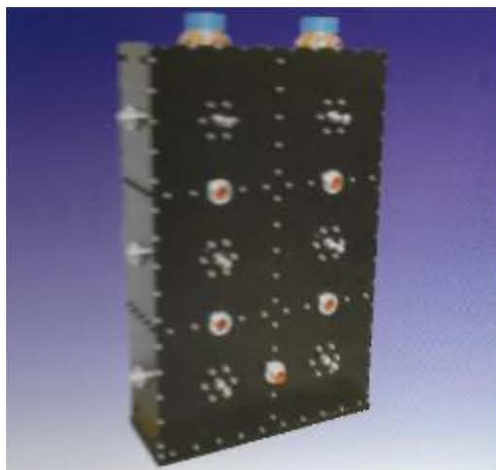
Features

- Suitable for ATV and DTV
- Tunable within entire UHF range
- Temperature Compensated
- High Q Coax Technique
- Low Loss and VSWR
- Customization available

Model	BPF-U-6-3KW	
Part Number	200537.01	
Frequency Range	470 ~ 862 MHz	
Power Capability	3000W Average	
Bandwidth	6, 7, and 8 MHz	
Insertion Loss	474MHz	862MHz
f(0)	≤ 0.35dB	≤ 0.35dB
f(0) +/- 3.8 MHz	≤ 0.9dB	≤ 0.9dB
f(0) +/- 6.0 MHz	≤ 35dB	≤ 35dB
f(0) +/- 12 MHz	≥ 40dB	≥ 40dB
VSWR	≤ 1.2	
Group Delay Ripple	≤ 300nS	
Directional Coupler	50 +/- 0.5dB	
Temperature Stability	≤ 2KHz/k	
Operating Temperature	-10° C ~ +50° C	
No. of Poles/Cavities	6	
Connectors	1/ 5/8 EIA DIN Type	
Dimensions	479 x 851 x 410mm (19" x 34" x 16.2")	
Weight	<59kg (130LBS)	

Specifications

5kW UHF 6 POLE FILTER (DTV)



Features

- Suitable for ATV and DTV
- Tunable within entire UHF range
- Temperature Compensated
- High Q Coax Technique
- Low Loss and VSWR
- Customization available

Model	BPF-U-6-5KW	
Part Number	200540.01	
Frequency Range	470 ~ 862 MHz	
Power Capability	5000W Average	
Bandwidth	6, 7, and 8 MHz	
Insertion Loss	474MHz	862MHz
f(0)	≤ 0.15dB	≤ 0.4dB
f(0) +/- 3.8 MHz	≤ 0.2dB	≤ 0.4dB
f(0) +/- 6.0 MHz	≤ 15dB	≤ 15dB
f(0) +/- 12 MHz	≥ 20dB	≥ 20dB
VSWR	≤ 1.1	
Group Delay Ripple	≤ 300nS	
Directional Coupler	50 +/- 0.5dB	
Temperature Stability	≤ 2KHz/k	
Operating Temperature	-10° C ~ +50° C	
No. of Poles/Cavities	6	
Connectors	3 1/8" EIA Type	
Dimensions	368 x 234 x 372mm (15" x 9" x 14.6")	
Weight	<49kg (108LBS)	

Specifications

Directional Coupler (7-16 DIN)



Model	DC-716-2
Part Number	200802.01 and 200803.01
Frequency Range	470 - 806 MHz
Power Capability	2000W Average
Coupling Sensitivity	50dB +/- 0.5dB
Directionality	≥21dB
Insertion Loss	≤ 0.1dB
Temperature Stability	≤ 1KHz/k
Operating Temperature	-30° C ~ +70° C
Coupler Connector Type	'N' Type (others upon request)
Input/Output Connector	7-16 DIN Type
Dimensions	152 x 82 x 48mm (6" x 3.5" x 2")
Weight	<2kg (4.4LBS)

Features

- Suitable for ATV and DTV
- Broadband 470-862 MHz
- High Power Capability
- Excellent Directivity
- Accurate Sensitivity
- Customization available

Specifications

UHF 300W 3dB Hybrid



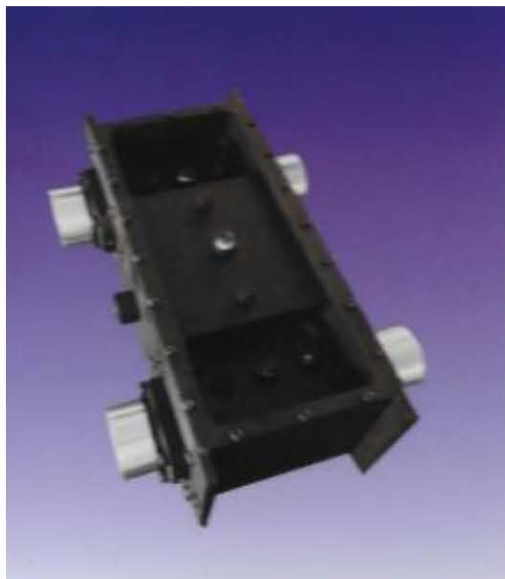
Model	3DBH-300
Part Number	200808.01
Frequency Range	470 - 806 MHz
Power Capability	300W Average
Insertion Loss	$\leq 0.25\text{dB}$
Attenuation	$\geq 26\text{dB}$
VSWR	$\leq 1:1.1$
Coupling Factor	3 +/- 0.1dB
Impedance	50 Ω
Temperature Range	-30° C ~ +70° C
Operational Humidity	5% ~ 95%
Dimensions	174 x 33 x 50mm (7" x 1.3" x 2")

Features

- Suitable for ATV and DTV
- Tunable within entire UHF band
- Temperature Compensated
- High Q Coax Technique
- Low Insertion Loss and VSWR
- Customization available

Specifications

UHF 500W – 20kW 3dB Hybrid



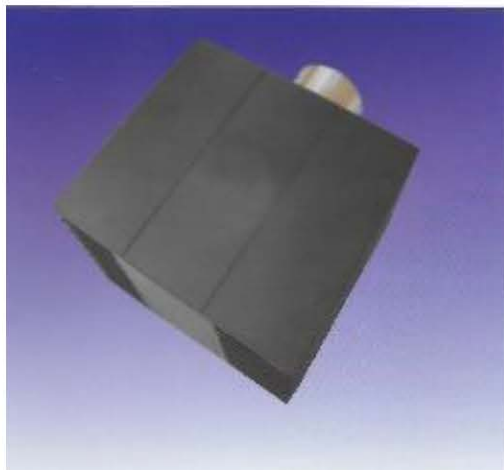
Model	3DBH-1K / 3DBH-10k / 3DBH-20K		
Part Number	200809.01		
Configuration	Coupled Stripline		
Frequency Range	470 - 806 MHz		
Input Power	1kW	10kW	20kW
VSWR	≤ 1.1	≤ 1.1	≤ 1.1
Isolation between inputs	≥ 32dB	≥ 32dB	≥ 32dB
Coupling Factor	3 +/- 0.1dB	3 +/- 0.1dB	3 +/- 0.1dB
Connectors	1 5/8" EIA	3 1/8" EIA	4 1/2" EIA
Temperature Range	-10° C ~ +50° C		
Operational Humidity	5% ~ 95%		
Dimensions - mm	220x75x135	345x135x205	345x135x205
Dimensions - inches	8.7x3x5.3	14x5.3x8.1	14x5.3x205

Features

- Suitable for ATV and DTV
- Tunable within entire UHF band
- Temperature Compensated
- High Q Coax Technique
- Low Insertion Loss and VSWR
- Customization available

Specifications

Dummy Load -100 – 800W



Model	DL-100 / DL-200 / DL-800		
Part Number	200501.01, 200502.01 and 200503.01		
Frequency Range	DC - 806 MHz		
Input Power	100W	200W	800W
VSWR	≤ 1.05		
Impedance	50 Ω		
Connectors	N Type	7-16 DIN	1 5/8" EIA
Temperature Range	-10° C ~ +50° C		
Operational Humidity	5% ~ 95%		
Dimensions	160 x 120 x 90mm (6.3" x 5" x 3.5")		

Features

- Suitable for ATV and DTV
- Broadband Performance
- No external cooling required
- Low VSWR

Specifications

Air Cooled Dummy Load -1000W



Model	DL-1000
Part Number	200504.01
Frequency Range	DC - 806 MHz
Input Power	1000W Average
VSWR	≤ 1.1
Impedance	50 Ω
Connectors	1 5/8" EIA
Temperature Range	-20° C ~ +60° C
Operational Humidity	5% ~ 95%
Dimensions	560 x 198 x 215mm (22" x 7.8" x 8.5")

Features

- Suitable for ATV and DTV
- Broadband Performance
- No external cooling required
- Low VSWR



Specifications



Anywave can provide a range of adaptors, connectors and flanges for sizes "N", 7-16 DIN, 1 5/8" EIA and 3 1/8" EIA.

Call your Anywave Sales Manager for a quotation or email sales@anywavecom.com





USA Headquarters



Lincolnshire, Illinois



China Headquarters



Shanghai

ABOUT ANYWAVE

With over 150 years in combined development experience, Anywave is proving to be a world leader in the design and manufacture of broadcast transmission equipment. Anywave Communication Technologies Co. Ltd was established in 2007. However, it was in 2004 that two members of Anywave found, as CNN Money put it, “a major fix for a digital-TV headache: screens that go blank when reception is poor”. The founders of Anywave had developed a technology that when installed inside an ATSC Television receiver, ensured significantly better reception and picture quality. This was considered by the broadcast industry a major breakthrough for ATSC technology. Today, Anywave’s core technical team has an abundance of experience in the development of digital TV technologies and has made significant contributions to most broadcast digital TV standards.

Based on its innovative technologies in direct digital RF adaptive digital pre-correction and echo cancellation, the company has independently developed a series of high performance digital TV transmission technologies and has become a leading supplier in the digital broadcast market.

The company’s HQ in Shanghai, China with it’s main North American office located in Chicago IL. Anywave offers world class technical support that provides customers not only with reliable products but also with optimum system solutions; to help reduce network construction and operating costs, improve signal coverage, increase emission efficiency, and enhance system reliability.

Anywave offers a wide range and ever growing products covering all world broadcast standards. From world renowned digital excitors to full solid state TV transmitters up to 20kW.



For Product Inquiries, please don't hesitate to contact us.

ANYWAVE

COMMUNICATION TECHNOLOGIES CO. LTD



300 KNIGHTSBRIDGE PARKWAY,
LINCOLNSHIRE, IL 60069-3655, USA



SEND US AN EMAIL

Sales_us@Anywavecom.com



CALL US

(+1) 847 415 2258 (Ext. 1)



VISIT OUR WEBSITE

www.anywavecom.com/en

